

Product datasheet for **TA347018S**

PKM2 (PKM) Mouse Monoclonal Antibody [Clone ID: 1F2-F4-H11]

Product data:

Product Type:	Primary Antibodies
Clone Name:	1F2-F4-H11
Applications:	IF, IP, WB
Recommended Dilution:	WB: 1:1000
Reactivity:	Human, Monkey
Host:	Mouse
Isotype:	IgG2b
Clonality:	Monoclonal
Immunogen:	The immunogen for PKM2 antibody: purified recombinant human PKM2 protein fragments expressed in E.coli.
Formulation:	PBS(pH 7.4) containing with 0.03% Proclin300 and 50% glycerol.
Purification:	Affinity purified
Conjugation:	Unconjugated
Storage:	Store at -20°C as received.
Stability:	Stable for 12 months from date of receipt.
Predicted Protein Size:	60 kDa
Gene Name:	pyruvate kinase, muscle
Database Link:	NP_002645 Entrez Gene 697742 Monkey Entrez Gene 5315 Human P14618

Background: This gene encodes a protein involved in glycolysis. The encoded protein is a pyruvate kinase that catalyzes the transfer of a phosphoryl group from phosphoenolpyruvate to ADP, generating ATP and pyruvate. This protein has been shown to interact with thyroid hormone and may mediate cellular metabolic effects induced by thyroid hormones. This protein has been found to bind Opa protein, a bacterial outer membrane protein involved in gonococcal adherence to and invasion of human cells, suggesting a role of this protein in bacterial pathogenesis. Several alternatively spliced transcript variants encoding a few distinct isoforms have been reported.



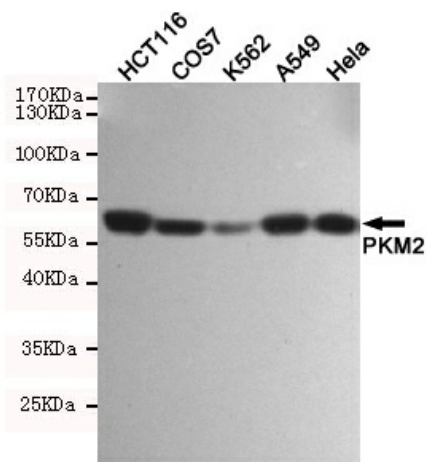
[View online »](#)

Synonyms: CTHBP; HEL-S-30; OIP3; PK3; PKM2; TCB; THBP1

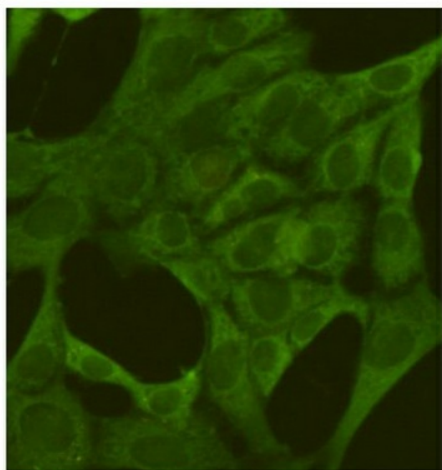
Protein Families: Druggable Genome

Protein Pathways: Glycolysis / Gluconeogenesis, Metabolic pathways, Purine metabolism, Pyruvate metabolism, Type II diabetes mellitus

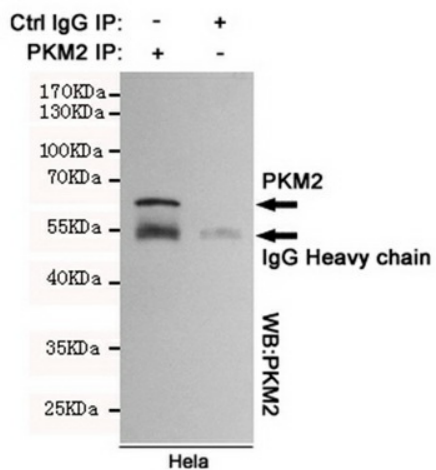
Product images:



Western blot detection of PKM2 in HCT116, COS7, K562, A549 and HeLa cell lysates using PKM2 mouse mAb (1:1000 diluted). Predicted band size: 60 kDa. Observed band size: 60 kDa.



Immunofluorescent analysis of 3T3 cells fixed by anhydrous methanol for 2h at -20°C and using anti-PKM2 mouse mAb (dilution 1:500).



Immunoprecipitation analysis of HeLa cell lysates using PKM2.