

Product datasheet for **TA347003**

MLH1 Mouse Monoclonal Antibody [Clone ID: 2B3-H6-C11]

Product data:

Product Type:	Primary Antibodies
Clone Name:	2B3-H6-C11
Applications:	WB
Recommended Dilution:	WB: 1:500
Reactivity:	Human
Host:	Mouse
Isotype:	IgG2b
Clonality:	Monoclonal
Immunogen:	The immunogen for MLH1 antibody: purified recombinant human MLH1 protein fragments expressed in E.coli.
Formulation:	Purified mouse monoclonal antibody in PBS(pH 7.4) containing with 0.02% sodium azide,0.1mg/mlBSA and 50% glycerol.
Purification:	Affinity purified
Conjugation:	Unconjugated
Storage:	Store at -20°C as received.
Stability:	Stable for 12 months from date of receipt.
Predicted Protein Size:	85 kDa
Gene Name:	mutL homolog 1
Database Link:	NP_000240 Entrez Gene 4292 Human P40692
Background:	This gene was identified as a locus frequently mutated in hereditary nonpolyposis colon cancer (HNPCC).It is a human homolog of the E. coli DNA mismatch repair gene mutL,consistent with the characteristic alterations in microsatellite sequences (RER+phenotype) found in HNPCC.Alternative splicing results in multiple transcript variants encoding distinct isoforms. Additional transcript variants have been described,but their full-length natures have not been determined. [provided by RefSeq,Nov 2009]
Synonyms:	COCA2; FCC2; hMLH1; HNPCC; HNPCC2

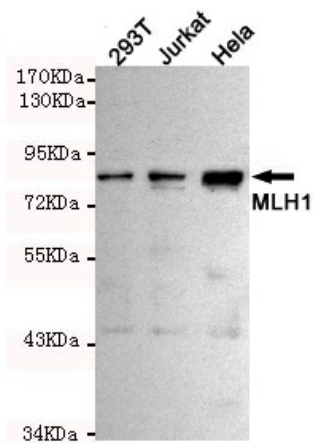


[View online »](#)

Protein Families: Druggable Genome

Protein Pathways: Colorectal cancer, Endometrial cancer, Mismatch repair, Pathways in cancer

Product images:



Western blot detection of MLH1 in HeLa, 293T and Jurkat cell lysates using MLH1 mouse mAb (1:500 diluted). Predicted band size: 85KDa. Observed band size: 85KDa.