

## Product datasheet for **TA347000**

### MAP2 Mouse Monoclonal Antibody [Clone ID: 1D7-B9-C8-F6]

#### Product data:

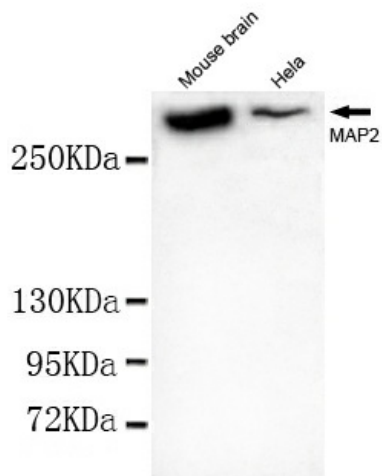
Product Type:	Primary Antibodies
Clone Name:	1D7-B9-C8-F6
Applications:	IF, IP, WB
Recommended Dilution:	WB: 1:1000, IF: 1:150
Reactivity:	Human, Mouse
Host:	Mouse
Isotype:	IgG2b
Clonality:	Monoclonal
Immunogen:	The immunogen for MAP2 antibody: purified recombinant human MAP2 (N-terminus) protein fragments expressed in E.coli
Formulation:	Purified mouse monoclonal in buffer containing 0.1M Tris-Glycine(pH 7.4,150mM NaCl)with 0.2%sodium azide,0.1%BSA,50%glycerol.
Purification:	Affinity purified
Conjugation:	Unconjugated
Storage:	Store at -20°C as received.
Stability:	Stable for 12 months from date of receipt.
Predicted Protein Size:	300 kDa
Gene Name:	microtubule associated protein 2
Database Link:	<a href="#">NP_114035</a> <a href="#">Entrez Gene 17756 Mouse</a> <a href="#">Entrez Gene 4133 Human</a> <a href="#">P11137</a>
Background:	This gene encodes a protein that belongs to the microtubule-associated protein family. The proteins of this family are thought to be involved in microtubule assembly, which is an essential step in neurogenesis. The products of similar genes in rat and mouse are neuron-specific cytoskeletal proteins that are enriched in dendrites, implicating a role in determining and stabilizing dendritic shape during neuron development. A number of alternatively spliced variants encoding distinct isoforms have been described. [provided by RefSeq, Jan 2010]
Synonyms:	MAP2A; MAP2B; MAP2C



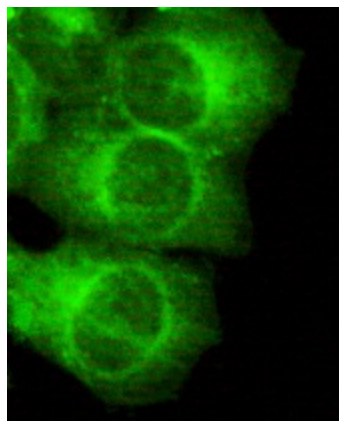
[View online »](#)

Protein Families: Adult stem cells, Druggable Genome, ES Cell Differentiation/IPS

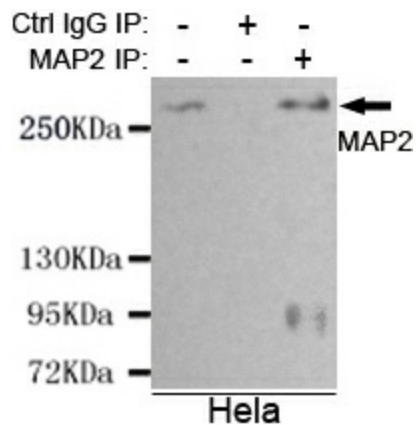
**Product images:**



Western blot detection of MAP2 (N-terminus) in Mouse Brain tissue and HeLa cell lysates using MAP2 (N-terminus) mouse mAb (1:1000 diluted). Predicted band size: 202KDa. Observed band size: 300KDa.



Immunocytochemistry of HeLa cells using anti-MAP2 (N-terminus) mouse mAb diluted 1:150.



Immunoprecipitation analysis of HeLa cell lysates using MAP2 (N-terminus) mouse mAb.