

## Product datasheet for **TA346994**

### Leptin (LEP) Mouse Monoclonal Antibody [Clone ID: 5C11-G6-B12]

#### Product data:

Product Type:	Primary Antibodies
Clone Name:	5C11-G6-B12
Applications:	ELISA
Reactivity:	Human
Host:	Mouse
Isotype:	IgG2a
Clonality:	Monoclonal
Immunogen:	The immunogen for LEP antibody: purified recombinant full length of human Leptin protein expressed in E.coli.
Formulation:	Purified mouse monoclonal antibody in PBS(pH 7.4) containing with 0.03% Proclin300 and 50% glycerol.
Purification:	Affinity purified
Conjugation:	Unconjugated
Storage:	Store at -20°C as received.
Stability:	Stable for 12 months from date of receipt.
Gene Name:	leptin
Database Link:	<a href="#">NP_000221</a> <a href="#">Entrez Gene 3952 Human</a> <a href="#">P41159</a>
Background:	This gene encodes a protein that is secreted by white adipocytes, and which plays a major role in the regulation of body weight. This protein, which acts through the leptin receptor, functions as part of a signaling pathway that can inhibit food intake and/or regulate energy expenditure to maintain constancy of the adipose mass. This protein also has several endocrine functions, and is involved in the regulation of immune and inflammatory responses, hematopoiesis, angiogenesis and wound healing. Mutations in this gene and/or its regulatory regions cause severe obesity, and morbid obesity with hypogonadism. This gene has also been linked to type 2 diabetes mellitus development.
Synonyms:	LEPD; OB; OBS

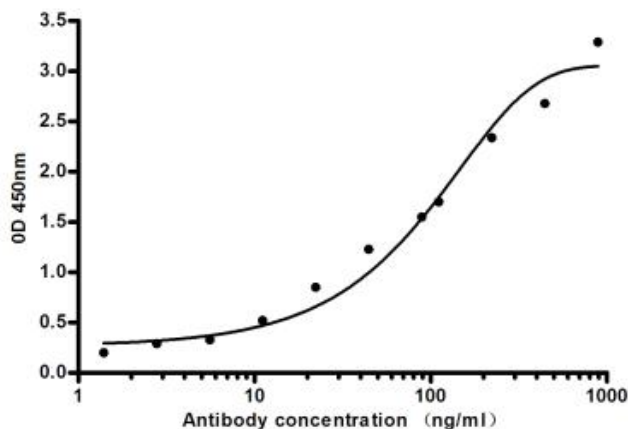


[View online »](#)

**Protein Families:** Druggable Genome, Secreted Protein

**Protein Pathways:** Adipocytokine signaling pathway, Cytokine-cytokine receptor interaction, Jak-STAT signaling pathway, Neuroactive ligand-receptor interaction

### Product images:



Indirect ELISA assay for anti-Leptin mouse mAb. Antigen coating concentration: 4ug/ml.