

Product datasheet for **TA346992**

MAP1LC3A Mouse Monoclonal Antibody [Clone ID: 4C8-B7-B9]

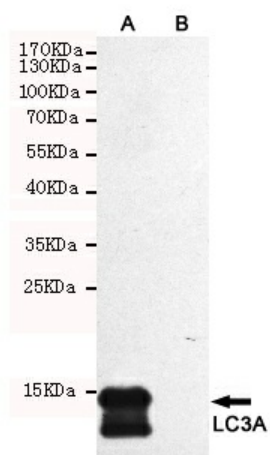
Product data:

Product Type:	Primary Antibodies
Clone Name:	4C8-B7-B9
Applications:	WB
Recommended Dilution:	WB: 1:2000
Reactivity:	Human
Host:	Mouse
Isotype:	IgG1
Clonality:	Monoclonal
Immunogen:	The immunogen for LC3A antibody: Recombinant protein of human LC3A.
Formulation:	Purified mouse monoclonal antibody in PBS(pH 7.4) containing with 0.03% Proclin300 and 50% glycerol.
Purification:	Affinity purified
Conjugation:	Unconjugated
Storage:	Store at -20°C as received.
Stability:	Stable for 12 months from date of receipt.
Gene Name:	microtubule associated protein 1 light chain 3 alpha
Database Link:	NP_115903 Entrez Gene 84557 Human Q9H492
Background:	MAP1A and MAP1B are microtubule-associated proteins which mediate the physical interactions between microtubules and components of the cytoskeleton. MAP1A and MAP1B each consist of a heavy chain subunit and multiple light chain subunits. The protein encoded by this gene is one of the light chain subunits and can associate with either MAP1A or MAP1B. Two transcript variants encoding different isoforms have been found for this gene. The expression of variant 1 is suppressed in many tumor cell lines, suggesting that may be involved in carcinogenesis.
Synonyms:	ATG8E; LC3; LC3A; MAP1ALC3; MAP1BLC3



[View online »](#)

Product images:



Western blot detection of LC3A in CHO-K1 cell lysate (B) and CHO-K1 transfected by LC3A (A) cell lysate using LC3A mouse mAb (1:2000 diluted).