

## Product datasheet for **TA346980**

### IL8 (CXCL8) Mouse Monoclonal Antibody [Clone ID: 6E7-C11-C9]

#### Product data:

Product Type:	Primary Antibodies
Clone Name:	6E7-C11-C9
Applications:	ELISA, WB
Recommended Dilution:	WB: 1:500
Reactivity:	Human
Host:	Mouse
Isotype:	IgG2b
Clonality:	Monoclonal
Immunogen:	The immunogen for IL8 antibody: purified recombinant human IL8 protein fragments expressed in E.coli.
Formulation:	Purified mouse monoclonal in PBS(pH 7.4) containing with 0.02% sodium azide and 50% glycerol.
Purification:	Affinity purified
Conjugation:	Unconjugated
Storage:	Store at -20°C as received.
Stability:	Stable for 12 months from date of receipt.
Predicted Protein Size:	20 kDa
Gene Name:	C-X-C motif chemokine ligand 8
Database Link:	<a href="#">NP_000575</a> <a href="#">Entrez Gene 3576 Human</a> <a href="#">P10145</a>
Background:	The protein encoded by this gene is a member of the CXC chemokine family. This chemokine is one of the major mediators of the inflammatory response. This chemokine is secreted by several cell types. It functions as a chemoattractant, and is also a potent angiogenic factor. This gene is believed to play a role in the pathogenesis of bronchiolitis, a common respiratory tract disease caused by viral infection. This gene and other ten members of the CXC chemokine gene family form a chemokine gene cluster in a region mapped to chromosome 4q. [provided by RefSeq, Jul 2008]



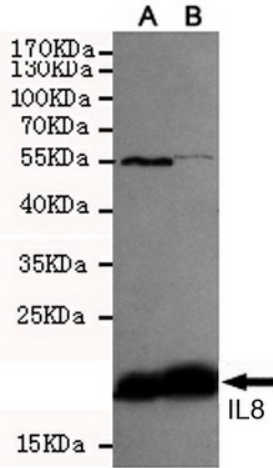
[View online »](#)

**Synonyms:** GCP-1; GCP1; IL8; LECT; LUCT; LYNAP; MDNCF; MONAP; NAF; NAP-1; NAP1

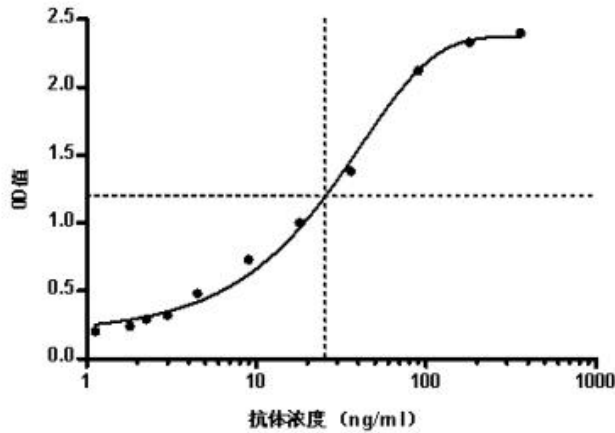
**Protein Families:** Druggable Genome, Secreted Protein, Transmembrane

**Protein Pathways:** Bladder cancer, Chemokine signaling pathway, Cytokine-cytokine receptor interaction, Epithelial cell signaling in Helicobacter pylori infection, NOD-like receptor signaling pathway, Pathways in cancer, RIG-I-like receptor signaling pathway, Toll-like receptor signaling pathway

**Product images:**



Western blot detection of IL8 in CHO-K1 transfected by IL8-PDGFR fusion protein cell lysate using IL8 mouse mAb (1:500 (A)-1:1000 (B) diluted).



Indirect ELISA assay for anti-IL8 mouse mAb. Antigen coating concentration: 8ug/ml.