

Product datasheet for **TA346894**

beta Actin (ACTB) Mouse Monoclonal Antibody [Clone ID: 8F10-G10]

Product data:

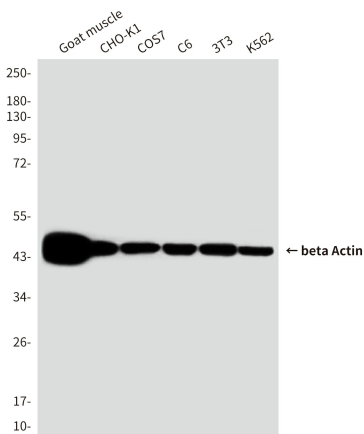
Product Type:	Primary Antibodies
Clone Name:	8F10-G10
Applications:	WB
Recommended Dilution:	WB: 1:10000
Reactivity:	Human, Broad
Host:	Mouse
Isotype:	IgG2b
Clonality:	Monoclonal
Immunogen:	The immunogen for beta-actin antibody: purified recombinant human beta actin protein fragments expressed in E.coli.
Formulation:	Purified mouse monoclonal in PB(pH 7.4) containing with 0.02% sodium azide and 50% glycerol.
Purification:	Affinity purified
Conjugation:	Unconjugated
Storage:	Store at -20°C as received.
Stability:	Stable for 12 months from date of receipt.
Predicted Protein Size:	45 kDa
Gene Name:	actin, beta
Database Link:	NP_001092 Entrez Gene 60 Human P60709
Background:	This gene encodes one of six different actin proteins. Actins are highly conserved proteins that are involved in cell motility, structure, and integrity. This actin is a major constituent of the contractile apparatus and one of the two nonmuscle cytoskeletal actins. [provided by RefSeq, Jul 2008]
Synonyms:	BRWS1; PS1TP5BP1
Protein Families:	ES Cell Differentiation/IPS



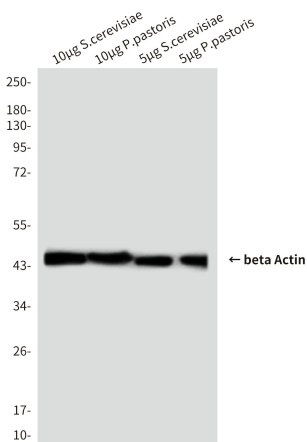
[View online »](#)

Protein Pathways:

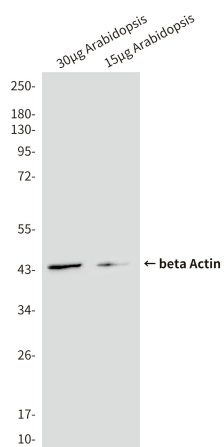
Adherens junction, Arrhythmogenic right ventricular cardiomyopathy (ARVC), Dilated cardiomyopathy, Focal adhesion, Hypertrophic cardiomyopathy (HCM), Leukocyte transendothelial migration, Pathogenic Escherichia coli infection, Regulation of actin cytoskeleton, Tight junction, Vibrio cholerae infection, Viral myocarditis

Product images:


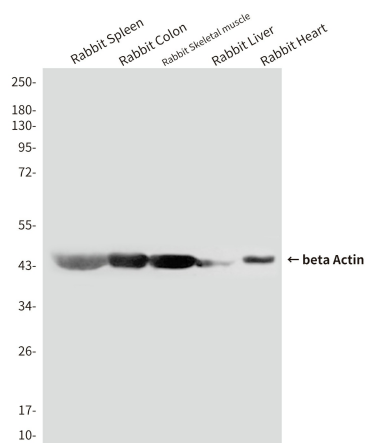
Western blot analysis of beta actin in C6, 3T3, COS7, CHO-K1, K562 and Goat muscle lysates using beta actin antibody.



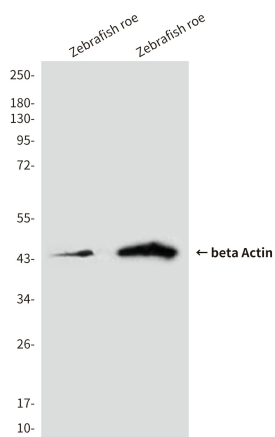
Western blot analysis of beta actin in 5ug & 10ug S.cerevisiae and 5ug & 10ug P.pastoris lysates using beta actin antibody.



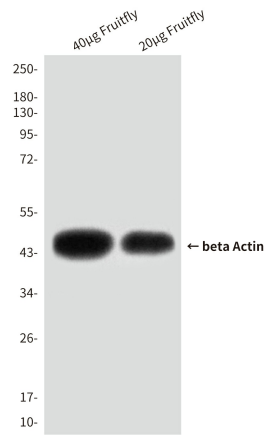
Western blot analysis of beta actin in 15µg Arabidopsis and 3µg Arabidopsis lysates using beta actin antibody.



Western blot analysis of beta actin in Rabbit Spleen, Rabbit Colon, Rabbit Skeletal muscle, Rabbit Liver and Rabbit Heart lysates using beta actin antibody.



Western blot analysis of beta actin in zebrafish roe lysates using beta actin antibody.



Western blot analysis of beta actin in 20ug & 40ug Fruit fly (*Drosophila melanogaster*) lysates using beta actin antibody.