

Product datasheet for **TA346893**

beta Actin (ACTB) Mouse Monoclonal Antibody [Clone ID: 6D7-F6-G10]

Product data:

Product Type:	Primary Antibodies
Clone Name:	6D7-F6-G10
Applications:	WB
Recommended Dilution:	WB: 1:1500
Reactivity:	Human, Monkey, Rat, Mouse, Goat, Hamster
Host:	Mouse
Isotype:	IgG3
Clonality:	Monoclonal
Immunogen:	The immunogen for beta-actin antibody: purified recombinant human beta actin protein fragments expressed in E.coli.
Formulation:	Purified mouse monoclonal in PB(pH 7.4) containing with 0.02% sodium azide,50% glycerol and 1mg/ml BSA.
Purification:	Affinity purified
Conjugation:	Unconjugated
Storage:	Store at -20°C as received.
Stability:	Stable for 12 months from date of receipt.
Predicted Protein Size:	45 kDa
Gene Name:	actin, beta
Database Link:	NP_001092 Entrez Gene 11461 Mouse Entrez Gene 81822 Rat Entrez Gene 574285 Monkey Entrez Gene 60 Human P60709
Background:	This gene encodes one of six different actin proteins.Actins are highly conserved proteins that are involved in cell motility,structure,and integrity.This actin is a major constituent of the contractile apparatus and one of the two nonmuscle cytoskeletal actins. [provided by RefSeq,Jul 2008]
Synonyms:	BRWS1; PS1TP5BP1

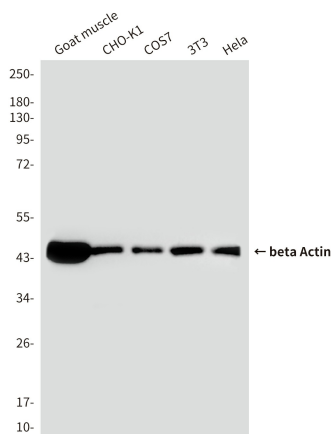


[View online »](#)

Protein Families: ES Cell Differentiation/IPS

Protein Pathways: Adherens junction, Arrhythmogenic right ventricular cardiomyopathy (ARVC), Dilated cardiomyopathy, Focal adhesion, Hypertrophic cardiomyopathy (HCM), Leukocyte transendothelial migration, Pathogenic Escherichia coli infection, Regulation of actin cytoskeleton, Tight junction, Vibrio cholerae infection, Viral myocarditis

Product images:



Western blot analysis of beta actin in HeLa, 3T3, COS7, CHO-K1 and Goat muscle lysates using beta actin antibody.