

Product datasheet for **TA346879S**

Albumin (ALB) Mouse Monoclonal Antibody [Clone ID: 7D1-C10-E7]

Product data:

Product Type:	Primary Antibodies
Clone Name:	7D1-C10-E7
Applications:	ELISA, WB
Recommended Dilution:	WB: 1:2000
Reactivity:	Human
Host:	Mouse
Isotype:	IgG1
Clonality:	Monoclonal
Immunogen:	The immunogen for ALB antibody: purified Human serum albumin.
Formulation:	Purified mouse monoclonal in PBS(pH 7.4) containing with 0.02% sodium azide and 50% glycerol.
Purification:	Affinity purified
Conjugation:	Unconjugated
Storage:	Store at -20°C as received.
Stability:	Stable for 12 months from date of receipt.
Predicted Protein Size:	67 kDa
Gene Name:	albumin
Database Link:	NP_000468 Entrez Gene 213 Human P02768

Background: Albumin is a soluble, monomeric protein which comprises about one-half of the blood serum protein. Albumin functions primarily as a carrier protein for steroids, fatty acids, and thyroid hormones and plays a role in stabilizing extracellular fluid volume. Albumin is a globular unglycosylated serum protein of molecular weight 65,000. Albumin is synthesized in the liver as prealbumin which has an N-terminal peptide that is removed before the nascent protein is released from the rough endoplasmic reticulum. The product, prealbumin, is in turn cleaved in the Golgi vesicles to produce the secreted albumin. [provided by RefSeq, Jul 2008]

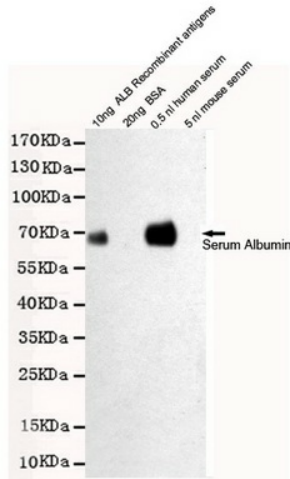
Synonyms: HSA; PRO0883; PRO0903; PRO1341



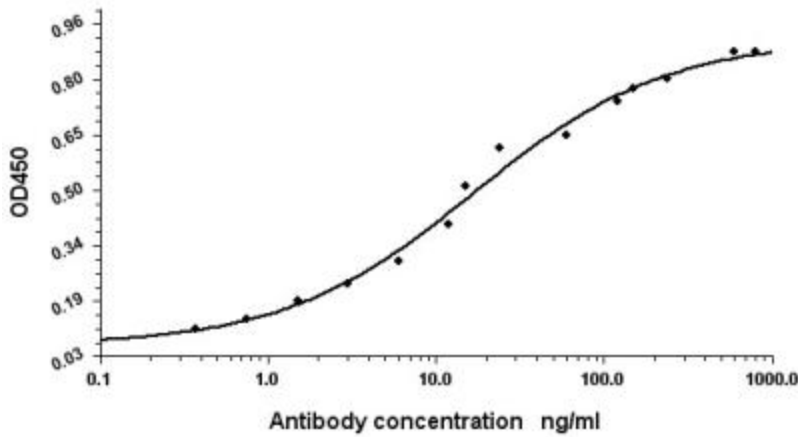
[View online »](#)

Protein Families: Secreted Protein

Product images:



Western blot detection of Human Serum Albumin in 0.5nl human serum and 10ng ALB Recombinant antigens cell lysates using Human Serum Albumin mouse mAb (1:2000 diluted). Predicted band size: 67KDa. Observed band size: 67KDa.



Indirect ELISA assay for anti-Human Serum Albumin mouse mAb. Antigen coating concentration: 8ug/ml.