

Product datasheet for **TA346871**

Angiotensin Converting Enzyme 1 (ACE) Mouse Monoclonal Antibody [Clone ID: 4F3-E6-H8]

Product data:

Product Type:	Primary Antibodies
Clone Name:	4F3-E6-H8
Applications:	WB
Recommended Dilution:	WB: 1:1000
Reactivity:	Mouse
Host:	Mouse
Isotype:	IgG2a
Clonality:	Monoclonal
Immunogen:	The immunogen for ACE antibody: purified recombinant human Angiotensin Converting Enzyme 1 protein fragments expressed in E.coli.
Formulation:	Purified mouse monoclonal in buffer containing 0.1M Tris-Glycine (pH 7.4, 150 mM NaCl) with 0.02% sodium azide, 50% glycerol
Purification:	Affinity purified
Conjugation:	Unconjugated
Storage:	Store at -20°C as received.
Stability:	Stable for 12 months from date of receipt.
Predicted Protein Size:	190 kDa
Gene Name:	angiotensin I converting enzyme
Database Link:	NP_000780 Entrez Gene 11421 Mouse P12821



[View online »](#)

Background:

This gene encodes an enzyme involved in catalyzing the conversion of angiotensin I into a physiologically active peptide angiotensin II. Angiotensin II is a potent vasopressor and aldosterone-stimulating peptide that controls blood pressure and fluid-electrolyte balance. This enzyme plays a key role in the renin-angiotensin system. Many studies have associated the presence or absence of a 287 bp Alu repeat element in this gene with the levels of circulating enzyme or cardiovascular pathophysiology. Two most abundant alternatively spliced variants of this gene encode two isoforms - the somatic form and the testicular form that are equally active. Multiple additional alternatively spliced variants have been identified but their full length nature has not been determined.

Synonyms:

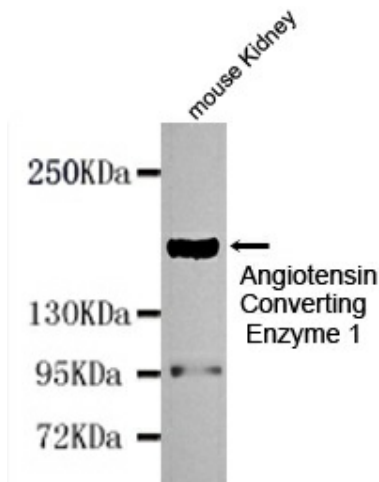
ACE1; CD143; DCP; DCP1

Protein Families:

Druggable Genome, ES Cell Differentiation/IPS, Protease, Secreted Protein, Transmembrane

Protein Pathways:

Hypertrophic cardiomyopathy (HCM), Renin-angiotensin system

Product images:

Western blot detection of Angiotensin Converting Enzyme 1 in Mouse kidney cell lysates using Angiotensin Converting Enzyme 1 mouse mAb (1:1000 diluted). Predicted band size: 150KDa. Observed band size: 190KDa.