

Product datasheet for **TA346867**

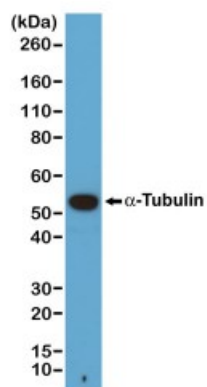
Tubulin (TUBA1B) Rabbit Monoclonal Antibody [Clone ID: RM113]

Product data:

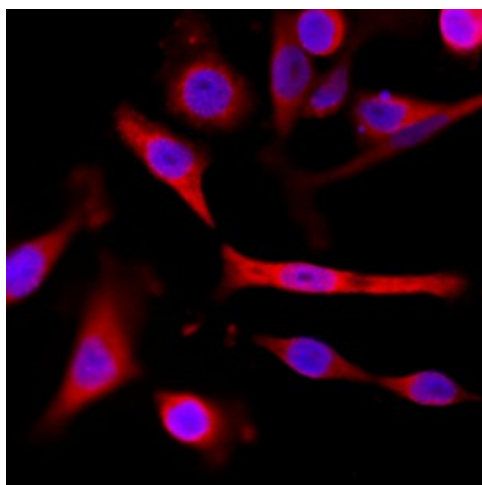
Product Type:	Primary Antibodies
Clone Name:	RM113
Applications:	IHC, WB
Recommended Dilution:	WB: 1:1000, IP: 1:200, CHIP: 1:200, ICC: 1:200, IHC: 1:200
Reactivity:	All Species
Host:	Rabbit
Isotype:	IgG
Clonality:	Monoclonal
Immunogen:	A peptide corresponding to the C-terminus of Alpha-Tubulin
Formulation:	PBS with 1% BSA and 0.09% sodium azide
Purification:	Protein A affinity purified from an animal origin-free culture supernatant
Conjugation:	Unconjugated
Storage:	Store at -20°C as received.
Stability:	Stable for 12 months from date of receipt.
Gene Name:	tubulin alpha 1b
Database Link:	NP_006073 Entrez Gene 10376 Human P68363
Synonyms:	K-ALPHA-1
Note:	RM113 reacts to $\hat{\pm}$ -Tubulin, including Tubulin alpha-1A chain and Tubulin
Protein Families:	Druggable Genome
Protein Pathways:	Gap junction, Pathogenic Escherichia coli infection



[View online »](#)

Product images:

Western blot of A431 cells, using anti-alpha-Tubulin antibody at 1/1000 dilution. A α -Tubulin band showed at the predicted MW (~50 kDa).



Immunocytochemistry of A431 cells, using anti-alpha-Tubulin antibody at 1/200 dilution (followed by a PE conjugated secondary antibody, red) and DAPI (blue).