

Product datasheet for **TA346866**

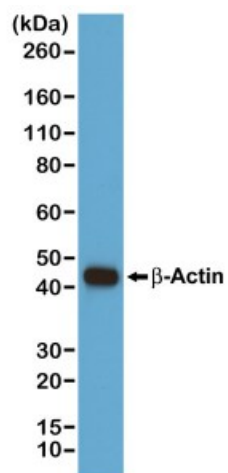
beta Actin (ACTB) Rabbit Monoclonal Antibody [Clone ID: RM112]

Product data:

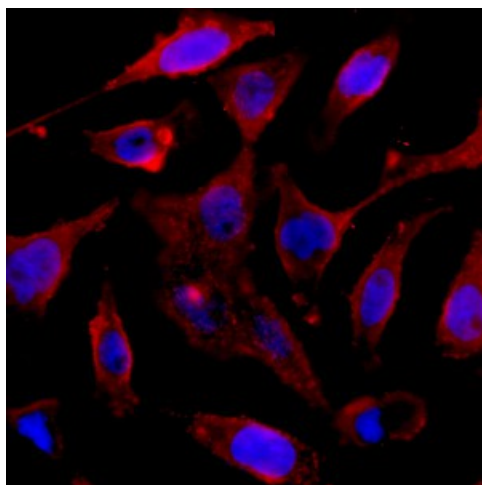
| | |
|-----------------------|---|
| Product Type: | Primary Antibodies |
| Clone Name: | RM112 |
| Applications: | IHC, WB |
| Recommended Dilution: | WB: 1:1000, IP: 1:200, CHIP: 1:200, ICC: 1:200, IHC: 1:200 |
| Reactivity: | All Species |
| Host: | Rabbit |
| Isotype: | IgG |
| Clonality: | Monoclonal |
| Immunogen: | A peptide corresponding to the N-terminus of beta-actin |
| Formulation: | PBS with 1% BSA and 0.09% sodium azide |
| Purification: | Protein A affinity purified from an animal origin-free culture supernatant |
| Conjugation: | Unconjugated |
| Storage: | Store at -20°C as received. |
| Stability: | Stable for 12 months from date of receipt. |
| Gene Name: | actin, beta |
| Database Link: | NP_001092 Entrez Gene 60 Human P60709 |
| Synonyms: | BRWS1; PS1TP5BP1 |
| Note: | RM112 reacts to β -Actin (Actin, cytoplasmic 1). No cross reactivity with |
| Protein Families: | ES Cell Differentiation/IPS |
| Protein Pathways: | Adherens junction, Arrhythmogenic right ventricular cardiomyopathy (ARVC), Dilated cardiomyopathy, Focal adhesion, Hypertrophic cardiomyopathy (HCM), Leukocyte transendothelial migration, Pathogenic Escherichia coli infection, Regulation of actin cytoskeleton, Tight junction, Vibrio cholerae infection, Viral myocarditis |



[View online »](#)

Product images:

Western blot of A431 cells, using anti-beta-actin antibody at 1/1000 dilution. A beta-Actin band showed at the predicted MW (42 kDa).



Immunocytochemistry of A431 cells, using anti-beta-actin antibody at 1/200 dilution (followed by a PE conjugated secondary antibody, red) and DAPI (blue).