

Product datasheet for **TA346860**

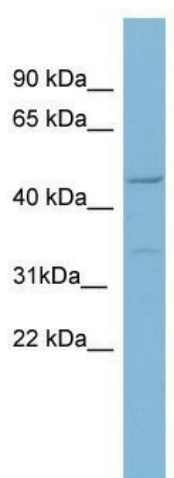
MATN1 Rabbit Polyclonal Antibody

Product data:

Product Type:	Primary Antibodies
Applications:	WB
Recommended Dilution:	WB
Reactivity:	Human
Host:	Rabbit
Isotype:	IgG
Clonality:	Polyclonal
Immunogen:	The immunogen for anti-MATN1 antibody: synthetic peptide directed towards the middle region of human MATN1. Synthetic peptide located within the following region: KYLIDNSFTVSSGARPGAQKVGIVFTDGRSQDYINDAAKKAKDLGFKMFA
Formulation:	Liquid. Purified antibody supplied in 1x PBS buffer with 0.09% (w/v) sodium azide and 2% sucrose. <i>Note that this product is shipped as lyophilized powder to China customers.</i>
Purification:	Affinity Purified
Conjugation:	Unconjugated
Storage:	Store at -20°C as received.
Stability:	Stable for 12 months from date of receipt.
Predicted Protein Size:	54 kDa
Gene Name:	matrilin 1, cartilage matrix protein
Database Link:	NP_002370 Entrez Gene 4146 Human P21941
Background:	This gene encodes a member of von Willebrand factor A domain containing protein family. This family of proteins are thought to be involved in the formation of filamentous networks in the extracellular matrices of various tissues. Mutations of this gene ha
Synonyms:	CMP; CRTM
Note:	Immunogen Sequence Homology: Dog: 100%; Pig: 100%; Rat: 100%; Horse: 100%; Human: 100%; Mouse: 100%; Bovine: 100%; Rabbit: 100%; Guinea pig: 100%



[View online »](#)

Product images:

WB Suggested Anti-MATN1 Antibody Titration:
0.2-1 ug/ml; ELISA Titer: 1:12500; Positive Control:
OVCAR-3 cell lysate MATN1 is strongly supported
by BioGPS gene expression data to be expressed
in Human OVCAR3 cells