

## Product datasheet for **TA346856**

### NEK9 Rabbit Polyclonal Antibody

#### Product data:

Product Type:	Primary Antibodies
Applications:	WB
Recommended Dilution:	WB
Reactivity:	Human
Host:	Rabbit
Isotype:	IgG
Clonality:	Polyclonal
Immunogen:	The immunogen for anti-NEK9 antibody: synthetic peptide directed towards the middle region of human NEK9. Synthetic peptide located within the following region: GGGGGEEEDSQESETPDPSGGFRGTMEADRGMEGLISPTTEAMGNSNGA
Formulation:	Liquid. Purified antibody supplied in 1x PBS buffer with 0.09% (w/v) sodium azide and 2% sucrose. <i>Note that this product is shipped as lyophilized powder to China customers.</i>
Purification:	Affinity Purified
Conjugation:	Unconjugated
Storage:	Store at -20°C as received.
Stability:	Stable for 12 months from date of receipt.
Predicted Protein Size:	107 kDa
Gene Name:	NIMA related kinase 9
Database Link:	<a href="#">NP_149107</a> <a href="#">Entrez Gene 91754 Human</a> <a href="#">Q8TD19</a>
Background:	NEK9 is a pleiotropic regulator of mitotic progression, participating in the control of spindle dynamics and chromosome separation. NEK9 phosphorylates different histones, myelin basic protein, beta-casein, and BICD2. NEK9 phosphorylates histone H3 on serine and threonine residues and beta-casein on serine residues. Important for G1/S transition and S phase progression.
Synonyms:	APUG; LCCS10; NC; NERCC; NERCC1

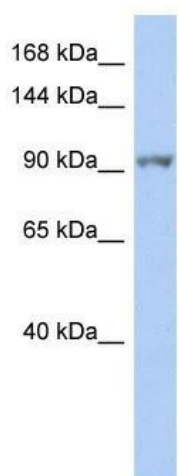


[View online »](#)

**Note:** Immunogen Sequence Homology: Dog: 100%; Pig: 100%; Rat: 100%; Horse: 100%; Human: 100%; Mouse: 100%; Rabbit: 100%; Guinea pig: 100%; Bovine: 86%

**Protein Families:** Druggable Genome, Protein Kinase

**Product images:**



WB Suggested Anti-NEK9 Antibody Titration: 0.2-1 ug/ml; ELISA Titer: 1: 312500; Positive Control: THP-1 cell lysate