

Product datasheet for **TA346855**

ALG2 Rabbit Polyclonal Antibody

Product data:

| | |
|-------------------------|--|
| Product Type: | Primary Antibodies |
| Applications: | WB |
| Recommended Dilution: | WB |
| Reactivity: | Human |
| Host: | Rabbit |
| Isotype: | IgG |
| Clonality: | Polyclonal |
| Immunogen: | The immunogen for anti-ALG2 antibody: synthetic peptide directed towards the C terminal of human ALG2. Synthetic peptide located within the following region: QSDLGQYVTLRFSFSDKQKISLLHSCTCVLYTPSNEHFGIVPLEAMYMQC |
| Formulation: | Liquid. Purified antibody supplied in 1x PBS buffer with 0.09% (w/v) sodium azide and 2% sucrose. <i>Note that this product is shipped as lyophilized powder to China customers.</i> |
| Purification: | Affinity Purified |
| Conjugation: | Unconjugated |
| Storage: | Store at -20°C as received. |
| Stability: | Stable for 12 months from date of receipt. |
| Predicted Protein Size: | 47 kDa |
| Gene Name: | ALG2, alpha-1,3/1,6-mannosyltransferase |
| Database Link: | NP_149078 Entrez Gene 85365 Human Q9H553 |
| Background: | This gene encodes a member of the glycosyltransferase 1 family. The encoded protein acts as an alpha 1,3 mannosyltransferase, mannosylating Man(2)GlcNAc(2)-dolichol diphosphate and Man(1)GlcNAc(2)-dolichol diphosphate to form Man(3)GlcNAc(2)-dolichol diphosphate. Defects in this gene have been associated with congenital disorder of glycosylation type 1h (CDG-1h). Alternative splicing results in multiple transcript variants. [provided by RefSeq, Nov 2008] |



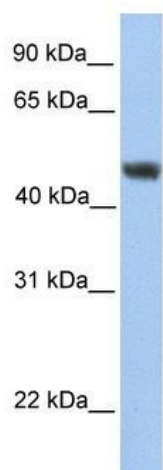
[View online »](#)

Synonyms: CDGII; hALPG2; NET38

Note: Immunogen Sequence Homology: Pig: 100%; Rat: 100%; Horse: 100%; Human: 100%; Mouse: 100%; Yeast: 100%; Bovine: 100%; Rabbit: 100%; Guinea pig: 100%; Dog: 93%; Zebrafish: 93%; Goat: 86%

Protein Pathways: Metabolic pathways, N-Glycan biosynthesis

Product images:



WB Suggested Anti-ALG2 Antibody Titration: 0.2-1 ug/ml; Positive Control: HepG2 cell lysate