

Product datasheet for **TA346851**

NSUN5C Rabbit Polyclonal Antibody

Product data:

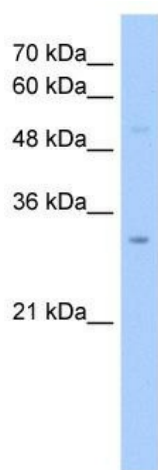
Product Type:	Primary Antibodies
Applications:	WB
Recommended Dilution:	WB
Reactivity:	Human
Host:	Rabbit
Isotype:	IgG
Clonality:	Polyclonal
Immunogen:	The immunogen for anti-NSUN5C antibody: synthetic peptide directed towards the middle region of human NSUN5C. Synthetic peptide located within the following region: PALPARPHRGLSTFPGAHEHCLRASPKTTLSGGFFVAVIERVEMPTSASQA
Formulation:	Liquid. Purified antibody supplied in 1x PBS buffer with 0.09% (w/v) sodium azide and 2% sucrose. <i>Note that this product is shipped as lyophilized powder to China customers.</i>
Purification:	Protein A purified
Conjugation:	Unconjugated
Storage:	Store at -20°C as received.
Stability:	Stable for 12 months from date of receipt.
Predicted Protein Size:	34 kDa
Database Link:	NP 115534 Entrez Gene 260294 Human
Background:	This locus represents a transcribed pseudogene of a nearby locus on chromosome 7, which encodes a putative methyltransferase. There is also a third closely related pseudogene locus in this region. There is extensive alternative splicing at this locus. [provided by RefSeq, Jul 2013]
Synonyms:	DKFZp434K058; DKFZp666P104; FLJ11626; member 5C; MGC15057; MGC129801; NOL1; NOL1R2; NOP2; Sun domain family; WBSCR20B; WBSCR20C; Williams Beuren syndrome chromosome region 20C



[View online »](#)

Note: Immunogen Sequence Homology: Human: 100%; Dog: 92%; Pig: 92%; Rat: 92%; Horse: 92%; Mouse: 92%; Bovine: 92%; Rabbit: 92%; Guinea pig: 92%

Product images:



WB Suggested Anti-NSUN5C Antibody Titration: 2.5 ug/ml; Positive Control: HepG2 cell lysate; NSUN5P2 is strongly supported by BioGPS gene expression data to be expressed in Human HepG2 cells