

Product datasheet for **TA346850**

TKTL2 Rabbit Polyclonal Antibody

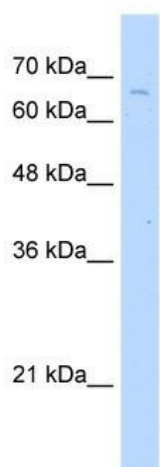
Product data:

Product Type:	Primary Antibodies
Applications:	WB
Recommended Dilution:	WB
Reactivity:	Human
Host:	Rabbit
Isotype:	IgG
Clonality:	Polyclonal
Immunogen:	The immunogen for anti-TKTL2 antibody: synthetic peptide directed towards the C terminal of human TKTL2. Synthetic peptide located within the following region: SSAKATGGRVITVEDHYREGGIGEAVCAAVSREPDILVHQLAVSGVPQRG
Formulation:	Liquid. Purified antibody supplied in 1x PBS buffer with 0.09% (w/v) sodium azide and 2% sucrose. <i>Note that this product is shipped as lyophilized powder to China customers.</i>
Purification:	Protein A purified
Conjugation:	Unconjugated
Storage:	Store at -20°C as received.
Stability:	Stable for 12 months from date of receipt.
Predicted Protein Size:	68 kDa
Gene Name:	transketolase-like 2
Database Link:	NP_115512 Entrez Gene 84076 Human Q9H0I9
Background:	The function remains unknown.
Synonyms:	DKFZp434L1717; FLJ32975
Note:	Immunogen Sequence Homology: Pig: 100%; Rat: 100%; Human: 100%; Mouse: 100%; Guinea pig: 100%; Dog: 93%; Horse: 93%; Bovine: 93%; Rabbit: 93%; Zebrafish: 86%
Protein Pathways:	Metabolic pathways, Pentose phosphate pathway



[View online »](#)

Product images:



WB Suggested Anti-TKTL2 Antibody Titration: 2.5 ug/ml; Positive Control: Jurkat cell lysate