

Product datasheet for **TA346846**

AGXT2L1 (ETNPPL) Rabbit Polyclonal Antibody

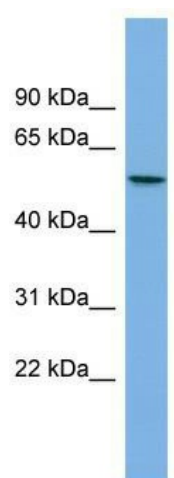
Product data:

| | |
|-------------------------|--|
| Product Type: | Primary Antibodies |
| Applications: | WB |
| Recommended Dilution: | WB |
| Reactivity: | Human |
| Host: | Rabbit |
| Isotype: | IgG |
| Clonality: | Polyclonal |
| Immunogen: | The immunogen for anti-AGXT2L1 antibody: synthetic peptide directed towards the middle region of human AGXT2L1. Synthetic peptide located within the following region: KRVLLSADGPHRNVLKIKPPMCFTEEDAKFMVDQLDRILTVLEEAMGTKT |
| Formulation: | Liquid. Purified antibody supplied in 1x PBS buffer with 0.09% (w/v) sodium azide and 2% sucrose. <i>Note that this product is shipped as lyophilized powder to China customers.</i> |
| Purification: | Affinity Purified |
| Conjugation: | Unconjugated |
| Storage: | Store at -20°C as received. |
| Stability: | Stable for 12 months from date of receipt. |
| Predicted Protein Size: | 56 kDa |
| Gene Name: | ethanolamine-phosphate phospho-lyase |
| Database Link: | NP_112569 Entrez Gene 64850 Human Q8TBG4 |
| Background: | The function of this protein remains unknown. |
| Synonyms: | AGXT2L1 |
| Note: | Immunogen Sequence Homology: Dog: 100%; Pig: 100%; Rat: 100%; Horse: 100%; Human: 100%; Mouse: 100%; Bovine: 100%; Rabbit: 100%; Guinea pig: 100%; Zebrafish: 93% |
| Protein Families: | Druggable Genome |



[View online »](#)

Product images:



WB Suggested Anti-AGXT2L1 Antibody Titration:
0.2-1 ug/ml; Positive Control: PANC1 cell lysate