

Product datasheet for **TA346842**

SETD7 Rabbit Polyclonal Antibody

Product data:

Product Type:	Primary Antibodies
Applications:	WB
Recommended Dilution:	WB
Reactivity:	Human
Host:	Rabbit
Isotype:	IgG
Clonality:	Polyclonal
Immunogen:	The immunogen for anti-SETD7 antibody: synthetic peptide directed towards the C terminal of human SETD7. Synthetic peptide located within the following region: PRFGPIKCIRTLRAVEADEELTVAYGYDHSPPGKSGPEAPEWYQVELKAF
Formulation:	Liquid. Purified antibody supplied in 1x PBS buffer with 0.09% (w/v) sodium azide and 2% sucrose. <i>Note that this product is shipped as lyophilized powder to China customers.</i>
Purification:	Protein A purified
Conjugation:	Unconjugated
Storage:	Store at -20°C as received.
Stability:	Stable for 12 months from date of receipt.
Predicted Protein Size:	41 kDa
Gene Name:	SET domain containing lysine methyltransferase 7
Database Link:	NP_085151 Entrez Gene 80854 Human Q8WTS6
Background:	SETD7 is a histone methyltransferase that specifically monomethylates 'Lys-4' of histone H3. H3 'Lys-4' methylation represents a specific tag for epigenetic transcriptional activation. It plays a central role in the transcriptional activation of genes such as collagenase or insulin. It is recruited by IPF1/PDX-1 to the insulin promoter, leading to activate transcription. It has also methyltransferase activity toward non-histone proteins such as p53/TP53, TAF10, and possibly TAF7 by recognizing and binding the [KR]-[STA]-K in substrate proteins.



[View online »](#)

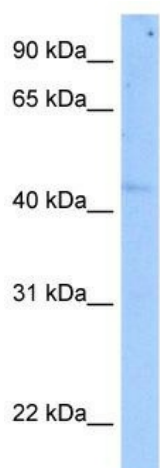
Synonyms: 9; KMT7; SET7; SET9

Note: Immunogen Sequence Homology: Dog: 100%; Pig: 100%; Rat: 100%; Horse: 100%; Human: 100%; Mouse: 100%; Bovine: 100%; Rabbit: 100%; Guinea pig: 93%; Zebrafish: 86%

Protein Families: Druggable Genome

Protein Pathways: Lysine degradation

Product images:



WB Suggested Anti-SETD7 Antibody Titration: 5.0 ug/ml; Positive Control: Human Pancreas