

Product datasheet for **TA346841**

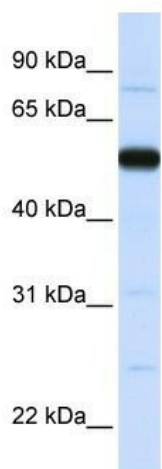
THUMPD2 Rabbit Polyclonal Antibody

Product data:

Product Type:	Primary Antibodies
Applications:	WB
Recommended Dilution:	WB
Reactivity:	Human
Host:	Rabbit
Isotype:	IgG
Clonality:	Polyclonal
Immunogen:	The immunogen for anti-THUMPD2 antibody: synthetic peptide directed towards the N terminal of human THUMPD2. Synthetic peptide located within the following region: GENEIIAKKLKIEQMQKIEENRDCQLEKQIKEETLEQRDFTTKSEKFE
Formulation:	Liquid. Purified antibody supplied in 1x PBS buffer with 0.09% (w/v) sodium azide and 2% sucrose. <i>Note that this product is shipped as lyophilized powder to China customers.</i>
Purification:	Affinity Purified
Conjugation:	Unconjugated
Storage:	Store at -20°C as received.
Stability:	Stable for 12 months from date of receipt.
Predicted Protein Size:	53 kDa
Gene Name:	THUMP domain containing 2
Database Link:	NP_079540 Entrez Gene 80745 Human Q9BTF0
Background:	THUMPD2 belongs to the methyltransferase superfamily. It contains 1 THUMP domain. The function of the THUMPD2 protein remains unknown.
Synonyms:	C2orf8
Note:	Immunogen Sequence Homology: Human: 100%
Protein Families:	Druggable Genome



[View online »](#)

Product images:

WB Suggested Anti-THUMPD2 Antibody Titration:
0.2-1 ug/ml; ELISA Titer: 1: 312500; Positive
Control: Human Placenta