

Product datasheet for **TA346840**

PNPLA3 Rabbit Polyclonal Antibody

Product data:

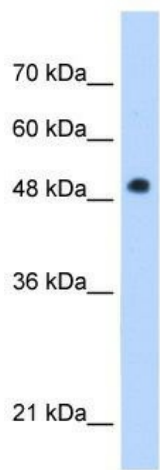
Product Type:	Primary Antibodies
Applications:	IHC, WB
Recommended Dilution:	WB, IHC
Reactivity:	Human
Host:	Rabbit
Isotype:	IgG
Clonality:	Polyclonal
Immunogen:	The immunogen for anti-PNPLA3 antibody: synthetic peptide directed towards the C terminal of human PNPLA3. Synthetic peptide located within the following region: CSPKGCPAETKAEATPRSILRSSLNFFLGNKVPAGAEGGLSTFPSFLEKS
Formulation:	Liquid. Purified antibody supplied in 1x PBS buffer with 0.09% (w/v) sodium azide and 2% sucrose. <i>Note that this product is shipped as lyophilized powder to China customers.</i>
Purification:	Affinity Purified
Conjugation:	Unconjugated
Storage:	Store at -20°C as received.
Stability:	Stable for 12 months from date of receipt.
Predicted Protein Size:	53 kDa
Gene Name:	patatin like phospholipase domain containing 3
Database Link:	NP_079501 Entrez Gene 80339 Human Q9NST1
Background:	The protein encoded by this gene is a triacylglycerol lipase that mediates triacylglycerol hydrolysis in adipocytes. The encoded protein, which appears to be membrane bound, may be involved in the balance of energy usage/storage in adipocytes. [provided by RefSeq, Jul 2008]
Synonyms:	ADPN; C22orf20; iPLA(2)epsilon
Note:	Immunogen Sequence Homology: Human: 100%



[View online »](#)

Protein Pathways: Glycerolipid metabolism, Glycerophospholipid metabolism, Limonene and pinene degradation, Metabolic pathways, Phenylalanine metabolism, Tyrosine metabolism

Product images:



WB Suggested Anti-PNPLA3 Antibody Titration: 1 ug/ml; Positive Control: Jurkat cell lysate



Human Heart