

## Product datasheet for **TA346839**

### **NAT13 (NAA50) Rabbit Polyclonal Antibody**

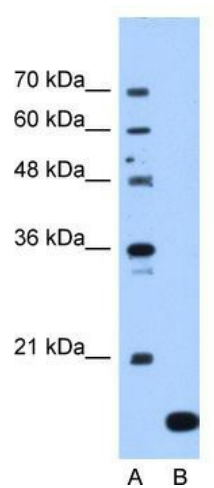
#### **Product data:**

|                                |  |
|--------------------------------|--|
| <b>Product Type:</b>           | Primary Antibodies   |
| <b>Applications:</b>           | WB   |
| <b>Recommended Dilution:</b>   | WB   |
| <b>Reactivity:</b>             | Human  |
| <b>Host:</b>                   | Rabbit   |
| <b>Isotype:</b>                | IgG  |
| <b>Clonality:</b>              | Polyclonal   |
| <b>Immunogen:</b>              | The immunogen for anti-NAT13 antibody: synthetic peptide directed towards the C terminal of human NAT13. Synthetic peptide located within the following region:<br>AIDFYRKFGFEIIEETKKNYYKRIEPADAHVLQKNLKVPSGQNADVQKTDN |
| <b>Formulation:</b>            | Liquid. Purified antibody supplied in 1x PBS buffer with 0.09% (w/v) sodium azide and 2% sucrose.<br><i>Note that this product is shipped as lyophilized powder to China customers.</i>                                |
| <b>Purification:</b>           | Protein A purified   |
| <b>Conjugation:</b>            | Unconjugated   |
| <b>Storage:</b>                | Store at -20°C as received.  |
| <b>Stability:</b>              | Stable for 12 months from date of receipt.   |
| <b>Predicted Protein Size:</b> | 19 kDa   |
| <b>Gene Name:</b>              | N(alpha)-acetyltransferase 50, NatE catalytic subunit  |
| <b>Database Link:</b>          | <a href="#">NP_079422</a><br><a href="#">Entrez Gene 80218 Human</a><br><a href="#">Q9GZZ1</a>   |
| <b>Background:</b>             | NAT13 is a probable catalytic component of the ARD1A-NARG1 complex which displays alpha (N-terminal) acetyltransferase activity.   |
| <b>Synonyms:</b>               | hNAT5; hSAN; MAK3; NAT5; NAT5P; NAT13; NAT13P; SAN   |
| <b>Note:</b>                   | Immunogen Sequence Homology: Dog: 100%; Pig: 100%; Horse: 100%; Human: 100%; Bovine: 100%; Rabbit: 100%; Rat: 93%; Guinea pig: 93%; Mouse: 86%   |



[View online »](#)

## Product images:



WB Suggested Anti-NAT13 Antibody Titration:  
1.25 ug/ml; Positive Control: Jurkat cell lysate;  
NAA50 is supported by BioGPS gene expression  
data to be expressed in Jurkat