

## Product datasheet for **TA346835**

### Dehydrodolichyl Diphosphate Synthase (DHDDS) Rabbit Polyclonal Antibody

#### Product data:

Product Type:	Primary Antibodies
Applications:	WB
Recommended Dilution:	WB
Reactivity:	Human
Host:	Rabbit
Isotype:	IgG
Clonality:	Polyclonal
Immunogen:	The immunogen for anti-DHDDS antibody: synthetic peptide directed towards the N terminal of human DHDDS. Synthetic peptide located within the following region: NRRYAKKCQVERQEGHSQGFKLAETLRWCLNLGILEVTVYAFSIENFKR
Formulation:	Liquid. Purified antibody supplied in 1x PBS buffer with 0.09% (w/v) sodium azide and 2% sucrose. <i>Note that this product is shipped as lyophilized powder to China customers.</i>
Purification:	Affinity Purified
Conjugation:	Unconjugated
Storage:	Store at -20°C as received.
Stability:	Stable for 12 months from date of receipt.
Predicted Protein Size:	39 kDa
Gene Name:	dehydrodolichyl diphosphate synthase subunit
Database Link:	<a href="#">NP_079163</a> <a href="#">Entrez Gene 79947 Human Q86SQ9</a>
Background:	The protein encoded by this gene catalyzes cis-prenyl chain elongation to produce the polyprenyl backbone of dolichol, a glycosyl carrier lipid required for the biosynthesis of several classes of glycoproteins. Mutations in this gene are associated with retinitis pigmentosa type 59. Alternatively spliced transcript variants encoding different isoforms have been described for this gene. [provided by RefSeq, Aug 2011]
Synonyms:	CIT; CPT; DS; HDS; RP59

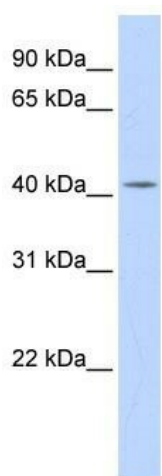


[View online »](#)

**Note:** Immunogen Sequence Homology: Dog: 100%; Pig: 100%; Rat: 100%; Horse: 100%; Human: 100%; Bovine: 100%; Rabbit: 100%; Guinea pig: 100%; Mouse: 93%; Zebrafish: 83%

**Protein Pathways:** Terpenoid backbone biosynthesis

**Product images:**



WB Suggested Anti-DHDDS Antibody Titration:  
0.2-1 ug/ml; ELISA Titer: 1: 312500; Positive  
Control: Human Placenta