

## Product datasheet for **TA346831**

### NEK11 Rabbit Polyclonal Antibody

#### Product data:

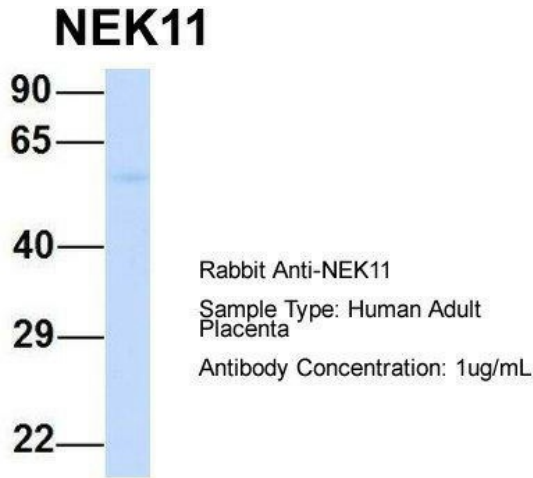
|                         |   |
|-------------------------|---|
| Product Type:           | Primary Antibodies  |
| Applications:           | WB  |
| Recommended Dilution:   | WB  |
| Reactivity:             | Human   |
| Host:                   | Rabbit  |
| Isotype:                | IgG   |
| Clonality:              | Polyclonal  |
| Immunogen:              | The immunogen for anti-NEK11 antibody: synthetic peptide directed towards the middle region of human NEK11. Synthetic peptide located within the following region: KEIRNEGSQPAYRTNQQDSDIEALARCLENVLGCTSLDTKTITTMAEDMS   |
| Formulation:            | Liquid. Purified antibody supplied in 1x PBS buffer with 0.09% (w/v) sodium azide and 2% sucrose.<br><i>Note that this product is shipped as lyophilized powder to China customers.</i>   |
| Purification:           | Affinity Purified   |
| Conjugation:            | Unconjugated  |
| Storage:                | Store at -20°C as received.   |
| Stability:              | Stable for 12 months from date of receipt.  |
| Predicted Protein Size: | 74 kDa  |
| Gene Name:              | NIMA related kinase 11  |
| Database Link:          | <a href="#">NP_079076</a><br><a href="#">Entrez Gene 79858 Human</a><br><a href="#">Q8NG66</a>  |
| Background:             | This gene encodes a member of the never in mitosis gene A family of kinases. The encoded protein localizes to the nucleoli, and may function with NEK2A in the S-phase checkpoint. The encoded protein appears to play roles in DNA replication and response to genotoxic stress. Alternatively spliced transcript variants have been described. [provided by RefSeq, Mar 2009] |
| Synonyms:               | FLJ23495  |
| Note:                   | Immunogen Sequence Homology: Horse: 100%; Human: 100%; Rat: 79%; Bovine: 77%  |



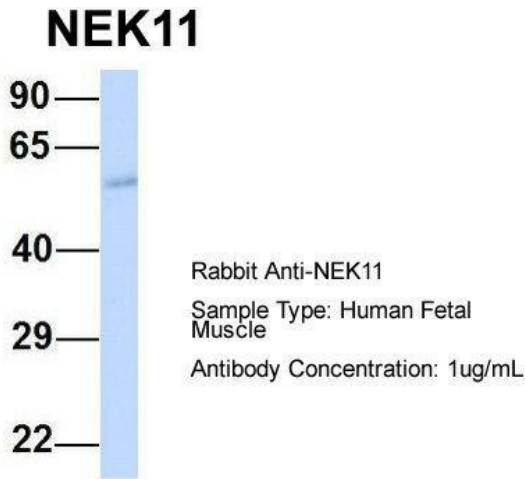
[View online »](#)

Protein Families: Druggable Genome, Protein Kinase

Product images:

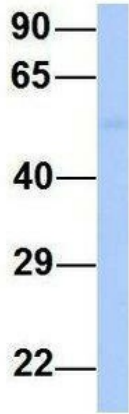


Host: Rabbit; Target Name: NEK11; Sample Tissue: Human Adult Placenta; Antibody Dilution: 1.0 ug/ml



Host: Rabbit; Target Name: NEK11; Sample Tissue: Human Fetal Muscle; Antibody Dilution: 1.0 ug/ml

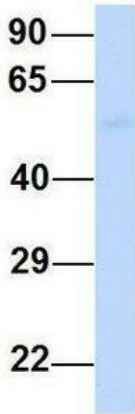
### NEK11



Rabbit Anti-NEK11  
 Sample Type: Human Fetal Heart  
 Antibody Concentration: 1ug/mL

Host: Rabbit; Target Name: NEK11; Sample Tissue: Human Fetal Heart; Antibody Dilution: 1.0 ug/ml

### NEK11



Rabbit Anti-NEK11  
 Sample Type: Human Fetal Lung  
 Antibody Concentration: 1ug/mL

Host: Rabbit; Target Name: NEK11; Sample Tissue: Human Fetal Lung; Antibody Dilution: 1.0 ug/ml



WB Suggested Anti-NEK11 Antibody Titration: 0.2-1 ug/ml; ELISA Titer: 1: 62500; Positive Control: 293T cell lysate; NEK11 is supported by BioGPS gene expression data to be expressed in HEK293T