

## Product datasheet for **TA346829**

### SUV39H2 Rabbit Polyclonal Antibody

#### Product data:

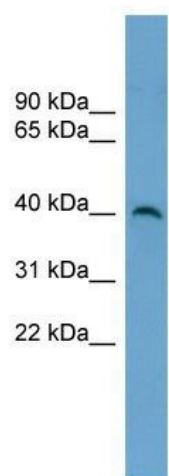
Product Type:	Primary Antibodies
Applications:	WB
Recommended Dilution:	WB
Reactivity:	Human
Host:	Rabbit
Isotype:	IgG
Clonality:	Polyclonal
Immunogen:	The immunogen for anti-SUV39H2 antibody: synthetic peptide directed towards the middle region of human SUV39H2. Synthetic peptide located within the following region: LDTRLPRIALFSTRINAGEELTFDYQMKGSGDISSDSIDHSPAKKRVRT
Formulation:	Liquid. Purified antibody supplied in 1x PBS buffer with 0.09% (w/v) sodium azide and 2% sucrose. <i>Note that this product is shipped as lyophilized powder to China customers.</i>
Purification:	Affinity Purified
Conjugation:	Unconjugated
Storage:	Store at -20°C as received.
Stability:	Stable for 12 months from date of receipt.
Predicted Protein Size:	40
Gene Name:	suppressor of variegation 3-9 homolog 2
Database Link:	<a href="#">NP_078946</a> <a href="#">Entrez Gene 79723 Human</a> <a href="#">Q9H5I1</a>
Background:	The function of this protein remains unknown.
Synonyms:	KMT1B
Note:	Immunogen Sequence Homology: Pig: 100%; Horse: 100%; Human: 100%; Mouse: 100%; Rabbit: 100%; Guinea pig: 100%; Dog: 93%; Bovine: 93%; Rat: 86%
Protein Families:	Druggable Genome



[View online »](#)

Protein Pathways: Lysine degradation

### Product images:



WB Suggested Anti-SUV39H2 Antibody Titration:  
0.2-1 ug/ml; ELISA Titer: 1: 312500; Positive  
Control: HepG2 cell lysate