

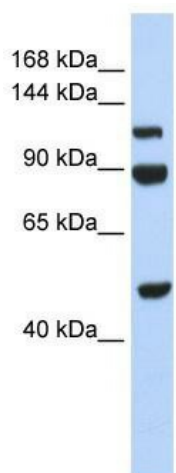
Product datasheet for **TA346824**

NARG1L (NAA16) Rabbit Polyclonal Antibody

Product data:

Product Type:	Primary Antibodies
Applications:	WB
Recommended Dilution:	WB
Reactivity:	Human
Host:	Rabbit
Isotype:	IgG
Clonality:	Polyclonal
Immunogen:	The immunogen for anti-NARG1L antibody: synthetic peptide directed towards the middle region of human NARG1L. Synthetic peptide located within the following region: RKGKFLMLQSVKRAFAINSNNPWLHECLIRFSKSVSNHSLPDIVSKVL
Formulation:	Liquid. Purified antibody supplied in 1x PBS buffer with 0.09% (w/v) sodium azide and 2% sucrose.
Purification:	Affinity Purified
Conjugation:	Unconjugated
Storage:	Store at -20°C as received.
Stability:	Stable for 12 months from date of receipt.
Predicted Protein Size:	101 kDa
Gene Name:	N(alpha)-acetyltransferase 16, NatA auxiliary subunit
Database Link:	NP_078837 Entrez Gene 79612 Human Q6N069
Background:	Auxillary subunit of the N-terminal acetyltransferase A (NatA) complex which displays alpha (N-terminal) acetyltransferase activity.
Synonyms:	NARG1L
Note:	Immunogen Sequence Homology: Dog: 100%; Pig: 100%; Rat: 100%; Human: 100%; Mouse: 100%; Bovine: 100%; Rabbit: 100%; Horse: 93%
Protein Families:	Druggable Genome, Transcription Factors


[View online »](#)

Product images:


WB Suggested Anti-NARG1L Antibody Titration:
 0.2-1 ug/ml; ELISA Titer: 1: 312500; Positive
 Control: 293T cell lysate; NAA16 is supported by
 BioGPS gene expression data to be expressed in
 HEK293T