

Product datasheet for **TA346823**

NARG1L (NAA16) Rabbit Polyclonal Antibody

Product data:

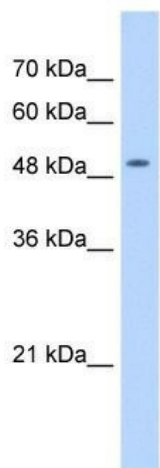
Product Type:	Primary Antibodies
Applications:	IHC, WB
Recommended Dilution:	WB, IHC
Reactivity:	Human
Host:	Rabbit
Isotype:	IgG
Clonality:	Polyclonal
Immunogen:	The immunogen for anti-NARG1L antibody: synthetic peptide directed towards the middle region of human NARG1L. Synthetic peptide located within the following region: ASLKTCDFFSPYENGEKEPPTLLWVQYFLAQHFDKLGQYSLALDYINAA
Formulation:	Liquid. Purified antibody supplied in 1x PBS buffer with 0.09% (w/v) sodium azide and 2% sucrose. <i>Note that this product is shipped as lyophilized powder to China customers.</i>
Purification:	Affinity Purified
Conjugation:	Unconjugated
Storage:	Store at -20°C as received.
Stability:	Stable for 12 months from date of receipt.
Predicted Protein Size:	50 kDa
Gene Name:	N(alpha)-acetyltransferase 16, NatA auxiliary subunit
Database Link:	NP_001104268 Entrez Gene 79612 Human Q6N069
Background:	Auxillary subunit of the N-terminal acetyltransferase A (NatA) complex which displays alpha (N-terminal) acetyltransferase activity.
Synonyms:	NARG1L
Note:	Immunogen Sequence Homology: Dog: 100%; Rat: 100%; Human: 100%; Mouse: 100%; Bovine: 100%; Rabbit: 100%; Pig: 93%; Horse: 93%



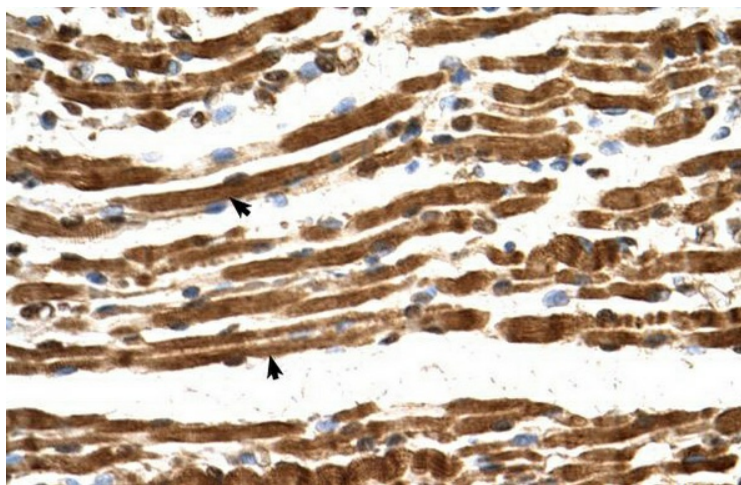
[View online »](#)

Protein Families: Druggable Genome, Transcription Factors

Product images:



WB Suggested Anti-NARG1L Antibody Titration: 1 ug/ml; Positive Control: HepG2 cell lysate NAA16 is supported by BioGPS gene expression data to be expressed in HepG2



Human Muscle