

Product datasheet for **TA346822**

PGS1 Rabbit Polyclonal Antibody

Product data:

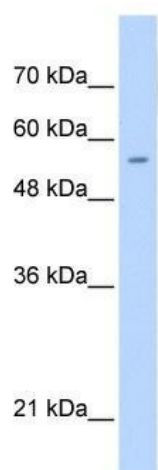
| | |
|-------------------------|---|
| Product Type: | Primary Antibodies |
| Applications: | IHC, WB |
| Recommended Dilution: | WB, IHC |
| Reactivity: | Human |
| Host: | Rabbit |
| Isotype: | IgG |
| Clonality: | Polyclonal |
| Immunogen: | The immunogen for anti-PGS1 antibody: synthetic peptide directed towards the C terminal of human PGS1. Synthetic peptide located within the following region: QIAIVTENQALQQQLHQEQEQLYLRSGVSSATFEQPSRQVKLWVKMVT |
| Formulation: | Liquid. Purified antibody supplied in 1x PBS buffer with 0.09% (w/v) sodium azide and 2% sucrose. <i>Note that this product is shipped as lyophilized powder to China customers.</i> |
| Purification: | Affinity Purified |
| Conjugation: | Unconjugated |
| Storage: | Store at -20°C as received. |
| Stability: | Stable for 12 months from date of receipt. |
| Predicted Protein Size: | 63 kDa |
| Gene Name: | phosphatidylglycerophosphate synthase 1 |
| Database Link: | NP_077733 Entrez Gene 9489 Human Q32NB8 |
| Background: | Functions in the biosynthesis of the anionic phospholipids phosphatidylglycerol and cardiolipin. |
| Synonyms: | DKFZp762M186; MGC131960 |
| Note: | Immunogen Sequence Homology: Pig: 100%; Human: 100%; Bovine: 100%; Guinea pig: 100%; Dog: 93%; Rat: 93%; Horse: 93%; Mouse: 86% |



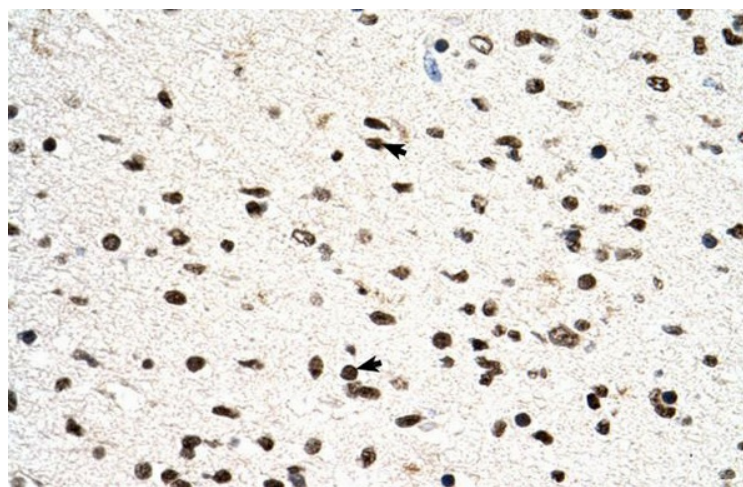
[View online >](#)

Protein Pathways: Glycerophospholipid metabolism, Metabolic pathways

Product images:



WB Suggested Anti-PGS1 Antibody Titration: 0.2-1 ug/ml; Positive Control: Jurkat cell lysate



Human Brain