

## Product datasheet for **TA346820**

### Mettl4 Rabbit Polyclonal Antibody

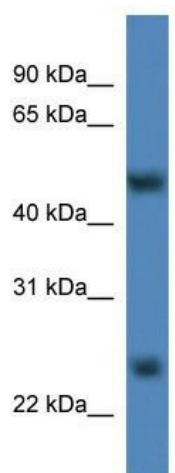
#### Product data:

Product Type:	Primary Antibodies
Applications:	WB
Recommended Dilution:	WB
Reactivity:	Rat
Host:	Rabbit
Isotype:	IgG
Clonality:	Polyclonal
Immunogen:	The immunogen for anti-Mettl4 antibody: synthetic peptide directed towards the C terminal of human Mettl4. Synthetic peptide located within the following region: SGEFVFPDLSLHKKPYECLVLGRVKEKTALALRNEAVRTPPVDPDQLIVS
Formulation:	Liquid. Purified antibody supplied in 1x PBS buffer with 0.09% (w/v) sodium azide and 2% sucrose.
Purification:	Affinity Purified
Conjugation:	Unconjugated
Storage:	Store at -20°C as received.
Stability:	Stable for 12 months from date of receipt.
Predicted Protein Size:	53 kDa
Gene Name:	methyltransferase like 4
Database Link:	<a href="#">NP_001178743</a> <a href="#">Entrez Gene 316731 Rat</a>
Background:	Probable methyltransferase.
Synonyms:	FLJ23017; HsT661; MGC117235
Note:	Immunogen Sequence Homology: Dog: 100%; Pig: 100%; Rat: 100%; Horse: 100%; Human: 100%; Mouse: 100%; Bovine: 100%; Rabbit: 100%; Guinea pig: 100%; Sheep: 93%; Zebrafish: 93%



[View online »](#)

## Product images:



WB Suggested Anti-Mettl4 Antibody Titration: 0.2-1 ug/ml; ELISA Titer: 1: 12500; Positive Control: Rat Liver