

Product datasheet for **TA346815**

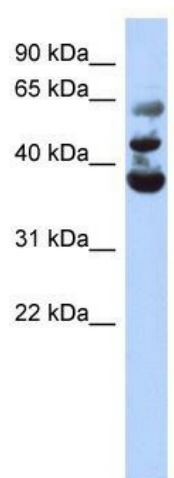
NSUN3 Rabbit Polyclonal Antibody

Product data:

| | |
|-------------------------|--|
| Product Type: | Primary Antibodies |
| Applications: | WB |
| Recommended Dilution: | WB |
| Reactivity: | Human |
| Host: | Rabbit |
| Isotype: | IgG |
| Clonality: | Polyclonal |
| Immunogen: | The immunogen for anti-NSUN3 antibody: synthetic peptide directed towards the middle region of human NSUN3. Synthetic peptide located within the following region: GGKSIALLQCACPGYLHCNEYDSLRLRWLRQTLESFIPQPLINVIKVSEL |
| Formulation: | Liquid. Purified antibody supplied in 1x PBS buffer with 0.09% (w/v) sodium azide and 2% sucrose. <i>Note that this product is shipped as lyophilized powder to China customers.</i> |
| Purification: | Affinity Purified |
| Conjugation: | Unconjugated |
| Storage: | Store at -20°C as received. |
| Stability: | Stable for 12 months from date of receipt. |
| Predicted Protein Size: | 38 kDa |
| Gene Name: | NOP2/Sun RNA methyltransferase family member 3 |
| Database Link: | NP_071355 Entrez Gene 63899 Human Q9H649 |
| Background: | May have S-adenosyl-L-methionine-dependent methyl-transferase activity. |
| Synonyms: | MST077; MSTP077 |
| Note: | Immunogen Sequence Homology: Human: 100%; Mouse: 100%; Rabbit: 100%; Pig: 93%; Bovine: 93%; Guinea pig: 93%; Horse: 92%; Rat: 86%; Dog: 85% |



[View online »](#)

Product images:

WB Suggested Anti-NSUN3 Antibody Titration:
0.2-1 ug/ml; ELISA Titer: 1: 312500; Positive
Control: Human Pancreas