

Product datasheet for **TA346814**

GMPPB Rabbit Polyclonal Antibody

Product data:

Product Type:	Primary Antibodies
Applications:	IHC, WB
Recommended Dilution:	WB, IHC
Reactivity:	Human
Host:	Rabbit
Isotype:	IgG
Clonality:	Polyclonal
Immunogen:	The immunogen for anti-GMPPB antibody: synthetic peptide directed towards the C terminal of human GMPPB. Synthetic peptide located within the following region: RCRVGQWVRMENVTVLGEDVIVNDELYLNGASVLPKHSIGESVPEPRIIM
Formulation:	Liquid. Purified antibody supplied in 1x PBS buffer with 0.09% (w/v) sodium azide and 2% sucrose. <i>Note that this product is shipped as lyophilized powder to China customers.</i>
Purification:	Protein A purified
Conjugation:	Unconjugated
Storage:	Store at -20°C as received.
Stability:	Stable for 12 months from date of receipt.
Predicted Protein Size:	43 kDa
Gene Name:	GDP-mannose pyrophosphorylase B
Database Link:	NP_037466 Entrez Gene 29925 Human Q9Y5P6
Background:	This gene is thought to encode a GDP-mannose pyrophosphorylase. The encoded protein catalyzes the conversion of mannose-1-phosphate and GTP to GDP-mannose, a reaction involved in the production of N-linked oligosaccharides. Alternatively spliced transcript variants encoding distinct isoforms have been described. [provided by RefSeq, Jan 2009]
Synonyms:	MDDGA14; MDDGB14; MDDGC14

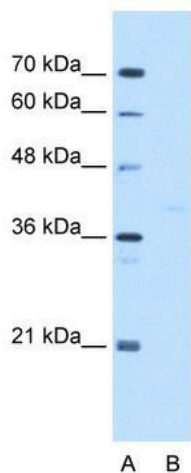


[View online »](#)

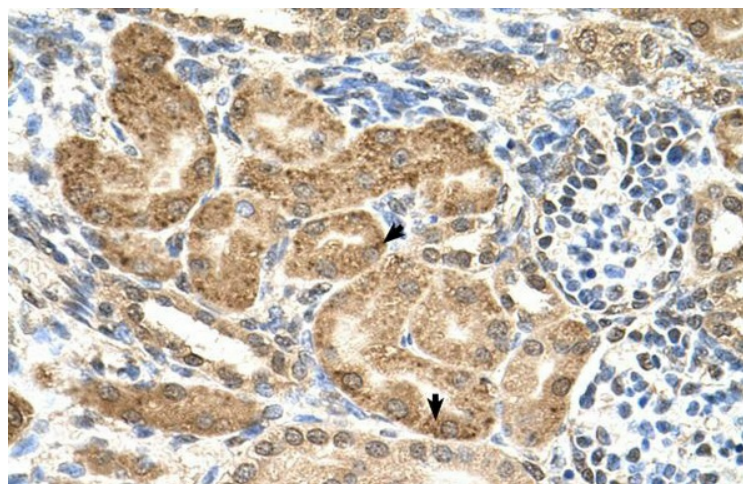
Note: Immunogen Sequence Homology: Dog: 100%; Pig: 100%; Rat: 100%; Horse: 100%; Human: 100%; Mouse: 100%; Bovine: 100%; Rabbit: 100%; Guinea pig: 100%; Zebrafish: 86%

Protein Pathways: Amino sugar and nucleotide sugar metabolism, Fructose and mannose metabolism, Metabolic pathways

Product images:



WB Suggested Anti-GMPPB Antibody Titration: 5.0 ug/ml; Positive Control: HepG2 cell lysate



Human kidney