

## Product datasheet for **TA346812**

### CHST6 Rabbit Polyclonal Antibody

#### Product data:

Product Type:	Primary Antibodies
Applications:	WB
Recommended Dilution:	WB
Reactivity:	Human
Host:	Rabbit
Isotype:	IgG
Clonality:	Polyclonal
Immunogen:	The immunogen for anti-CHST6 antibody: synthetic peptide directed towards the middle region of human CHST6. Synthetic peptide located within the following region: QELCAGALQLLGYRPVYSEDEQRNLALDLVLPRGLNGFTWASSTASHPRN
Formulation:	Liquid. Purified antibody supplied in 1x PBS buffer with 0.09% (w/v) sodium azide and 2% sucrose. <i>Note that this product is shipped as lyophilized powder to China customers.</i>
Purification:	Affinity Purified
Conjugation:	Unconjugated
Storage:	Store at -20°C as received.
Stability:	Stable for 12 months from date of receipt.
Predicted Protein Size:	44 kDa
Gene Name:	carbohydrate sulfotransferase 6
Database Link:	<a href="#">NP_067628</a> <a href="#">Entrez Gene 4166 Human</a> <a href="#">Q9GZX3</a>
Background:	The protein encoded by this gene is an enzyme that catalyzes the transfer of a sulfate group to the GlcNAc residues of keratan. Keratan sulfate helps maintain corneal transparency. Defects in this gene are a cause of macular corneal dystrophy (MCD). [provided by RefSeq, Jan 2010]
Synonyms:	MCDC1

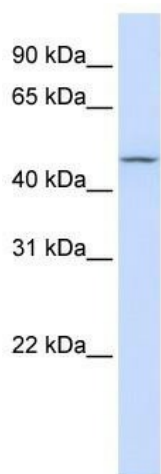


[View online »](#)

**Note:** Immunogen Sequence Homology: Human: 100%; Horse: 86%; Dog: 83%; Pig: 82%; Guinea pig: 82%; Rat: 79%; Bovine: 79%

**Protein Pathways:** Keratan sulfate biosynthesis, Metabolic pathways

**Product images:**



WB Suggested Anti-CHST6 Antibody Titration: 0.2-1 ug/ml; ELISA Titer: 1: 1562500; Positive Control: 293T cell lysate