

## Product datasheet for **TA346808**

### TTC7A Rabbit Polyclonal Antibody

#### Product data:

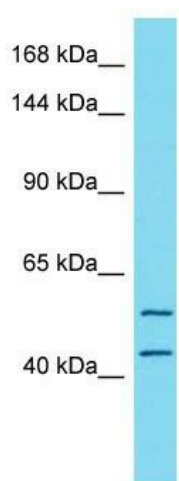
Product Type:	Primary Antibodies
Applications:	WB
Recommended Dilution:	WB
Reactivity:	Human
Host:	Rabbit
Isotype:	IgG
Clonality:	Polyclonal
Immunogen:	The immunogen for Anti-TTC7A antibody is: synthetic peptide directed towards the N-terminal region of Human TTC7A. Synthetic peptide located within the following region: EAGEFLPKGYLALGLTYSLQATDATALKSKQDELHRKALQTLERAQQLAPS
Formulation:	Liquid. Purified antibody supplied in 1x PBS buffer with 0.09% (w/v) sodium azide and 2% sucrose. <i>Note that this product is shipped as lyophilized powder to China customers.</i>
Purification:	Affinity Purified
Conjugation:	Unconjugated
Storage:	Store at -20°C as received.
Stability:	Stable for 12 months from date of receipt.
Predicted Protein Size:	55 kDa
Gene Name:	tetratricopeptide repeat domain 7A
Database Link:	<a href="#">NP_001275880</a> <a href="#">Entrez Gene 57217 Human</a> <a href="#">Q9ULT0</a>
Background:	This gene encodes a protein containing tetratricopeptide repeats. Mutations in this gene disrupt intestinal development and can cause early onset inflammatory bowel disease and intestinal atresia. Alternative splicing results in multiple transcript variants. [provided by RefSeq, Jun 2014]
Synonyms:	GIDID; MINAT; TTC7



[View online »](#)

**Note:** Immunogen Sequence Homology: Dog: 100%; Pig: 100%; Rat: 100%; Horse: 100%; Human: 100%; Mouse: 100%; Bovine: 100%; Rabbit: 100%; Guinea pig: 100%

### Product images:



Host: Rabbit; Target Name: TTC7A; Sample Tissue: Stomach Tumor lysates; Antibody Dilution: 1.0 ug/ml