

## Product datasheet for **TA346807**

### **PRTFDC1 Rabbit Polyclonal Antibody**

#### **Product data:**

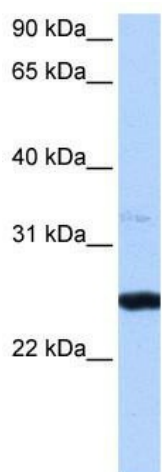
<b>Product Type:</b>	Primary Antibodies
<b>Applications:</b>	WB
<b>Recommended Dilution:</b>	WB
<b>Reactivity:</b>	Human
<b>Host:</b>	Rabbit
<b>Isotype:</b>	IgG
<b>Clonality:</b>	Polyclonal
<b>Immunogen:</b>	The immunogen for anti-PRTFDC1 antibody: synthetic peptide directed towards the middle region of human PRTFDC1. Synthetic peptide located within the following region: MKALLSNIKEYKPNMIKVASLLVKRTSRSDGFRPDYAGFEIPNLFVVGYA
<b>Formulation:</b>	Liquid. Purified antibody supplied in 1x PBS buffer with 0.09% (w/v) sodium azide and 2% sucrose. <i>Note that this product is shipped as lyophilized powder to China customers.</i>
<b>Purification:</b>	Affinity Purified
<b>Conjugation:</b>	Unconjugated
<b>Storage:</b>	Store at -20°C as received.
<b>Stability:</b>	Stable for 12 months from date of receipt.
<b>Predicted Protein Size:</b>	26 kDa
<b>Gene Name:</b>	phosphoribosyl transferase domain containing 1
<b>Database Link:</b>	<a href="#">NP_064585</a> <a href="#">Entrez Gene 56952 Human</a> <a href="#">Q9NRG1</a>
<b>Background:</b>	Has low, barely detectable phosphoribosyltransferase activity (in vitro). Binds GMP, IMP and alpha-D-5-phosphoribosyl 1-pyrophosphate (PRPP). Is not expected to contribute to purine metabolism or GMP salvage.
<b>Synonyms:</b>	HHGP
<b>Note:</b>	Immunogen Sequence Homology: Pig: 100%; Horse: 100%; Human: 100%; Dog: 92%; Rat: 92%; Rabbit: 77%; Zebrafish: 77%



[View online »](#)

Protein Families: Druggable Genome

### Product images:



WB Suggested Anti-PRTFDC1 Antibody Titration:  
0.2-1 ug/ml; Positive Control: HepG2 cell lysate