

Product datasheet for **TA346806**

PRTFDC1 Rabbit Polyclonal Antibody

Product data:

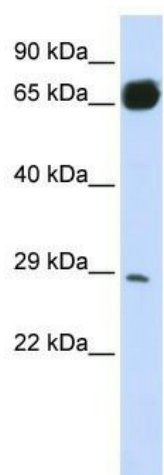
Product Type:	Primary Antibodies
Applications:	WB
Recommended Dilution:	WB
Reactivity:	Human
Host:	Rabbit
Isotype:	IgG
Clonality:	Polyclonal
Immunogen:	The immunogen for anti-PRTFDC1 antibody: synthetic peptide directed towards the N terminal of human PRTFDC1. Synthetic peptide located within the following region: AGSSEEAPDYGRGVIMDDWPGYDLNLFYTPQHYYGDLEYVLIPHGIIVD
Formulation:	Liquid. Purified antibody supplied in 1x PBS buffer with 0.09% (w/v) sodium azide and 2% sucrose. <i>Note that this product is shipped as lyophilized powder to China customers.</i>
Purification:	Affinity Purified
Conjugation:	Unconjugated
Storage:	Store at -20°C as received.
Stability:	Stable for 12 months from date of receipt.
Predicted Protein Size:	26 kDa
Gene Name:	phosphoribosyl transferase domain containing 1
Database Link:	NP_064585 Entrez Gene 56952 Human Q9NRG1
Background:	Has low, barely detectable phosphoribosyltransferase activity (in vitro). Binds GMP, IMP and alpha-D-5-phosphoribosyl 1-pyrophosphate (PRPP). Is not expected to contribute to purine metabolism or GMP salvage.
Synonyms:	HHGP
Note:	Immunogen Sequence Homology: Pig: 100%; Human: 100%; Rat: 86%



[View online »](#)

Protein Families: Druggable Genome

Product images:



WB Suggested Anti-PRTFDC1 Antibody Titration:
0.2-1 ug/ml; ELISA Titer: 1: 12500; Positive
Control: 293T cell lysate