

Product datasheet for **TA346803**

POLR1B Rabbit Polyclonal Antibody

Product data:

Product Type:	Primary Antibodies
Applications:	WB
Recommended Dilution:	WB
Reactivity:	Human
Host:	Rabbit
Isotype:	IgG
Clonality:	Polyclonal
Immunogen:	The immunogen for anti-POLR1B antibody: synthetic peptide directed towards the middle region of human POLR1B. Synthetic peptide located within the following region: SDKFQVRTTGARDRVTNQPIGGRNVQGGIRFGEMERDALLAHGTSFLLHD
Formulation:	Liquid. Purified antibody supplied in 1x PBS buffer with 0.09% (w/v) sodium azide and 2% sucrose. <i>Note that this product is shipped as lyophilized powder to China customers.</i>
Purification:	Affinity Purified
Conjugation:	Unconjugated
Storage:	Store at -20°C as received.
Stability:	Stable for 12 months from date of receipt.
Predicted Protein Size:	128 kDa
Gene Name:	polymerase (RNA) I subunit B
Database Link:	NP_061887 Entrez Gene 84172 Human Q9H9Y6



[View online »](#)

Background:

Eukaryotic RNA polymerase I (pol I) is responsible for the transcription of ribosomal RNA (rRNA) genes and production of rRNA, the primary component of ribosomes. Pol I is a multisubunit enzyme composed of 6 to 14 polypeptides, depending on the species. Most of the mass of the pol I complex derives from the 2 largest subunits, Rpa1 and Rpa2 in yeast. POLR1B is homologous to Rpa2 (Seither and Grummt, 1996 [PubMed 8921381]). [supplied by OMIM, Mar 2008]. Transcript Variant: This variant (2) lacks an alternate in-frame exon in the 5' coding region, compared to variant 1, resulting in a shorter isoform (2), compared to isoform 1. Sequence Note: This RefSeq record was created from transcript and genomic sequence data to make the sequence consistent with the reference genome assembly. The genomic coordinates used for the transcript record were based on transcript alignments. Publication Note: This RefSeq record includes a subset of the publications that are available for this gene. Please see the Gene record to access additional publications. ##Evidence-Data-START## Transcript exon combination :: AK022533.1 [ECO:0000332] RNAseq introns :: single sample supports all introns ERS025087 [ECO:0000348] ##Evidence-Data-END## COMPLETENESS: complete on the 3' end.

Synonyms:

RPA2; RPA135; Rpo1-2

Note:

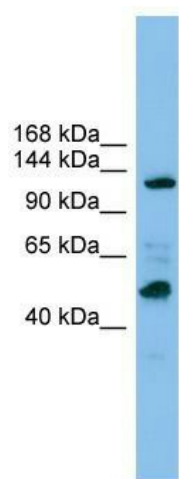
Immunogen Sequence Homology: Pig: 100%; Human: 100%; Rabbit: 100%; Dog: 93%; Rat: 93%; Horse: 93%; Bovine: 93%; Guinea pig: 93%; Mouse: 86%; Zebrafish: 86%

Protein Families:

Transcription Factors

Protein Pathways:

Metabolic pathways, Purine metabolism, Pyrimidine metabolism, RNA polymerase

Product images:

WB Suggested Anti-POLR1B Antibody Titration:
0.2-1 ug/ml; ELISA Titer: 1: 312500; Positive
Control: ACHN cell lysate