

## Product datasheet for **TA346800**

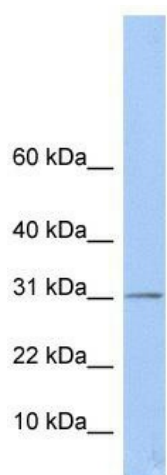
### ECHDC1 Rabbit Polyclonal Antibody

#### Product data:

Product Type:	Primary Antibodies
Applications:	WB
Recommended Dilution:	WB
Reactivity:	Human
Host:	Rabbit
Isotype:	IgG
Clonality:	Polyclonal
Immunogen:	The immunogen for anti-ECHDC1 antibody: synthetic peptide directed towards the middle region of human ECHDC1. Synthetic peptide located within the following region: GVMMMLQLLEKVIENWTEGKGLIVRGAKNTFSSGSDLNAVKSLGTPEDG
Formulation:	Liquid. Purified antibody supplied in 1x PBS buffer with 0.09% (w/v) sodium azide and 2% sucrose.
Purification:	Affinity Purified
Conjugation:	Unconjugated
Storage:	Store at -20°C as received.
Stability:	Stable for 12 months from date of receipt.
Predicted Protein Size:	33 kDa
Gene Name:	ethylmalonyl-CoA decarboxylase 1
Database Link:	<a href="#">NP_001002030</a> <a href="#">Entrez Gene 55862 Human</a> <a href="#">Q9NTX5</a>
Background:	ECHDC1 belongs to the enoyl-CoA hydratase/isomerase family. The exact function of ECHDC1 remains unknown.
Synonyms:	dj351K20.2; HEL-S-76; MMCD
Note:	Immunogen Sequence Homology: Dog: 100%; Pig: 100%; Rat: 100%; Human: 100%; Bovine: 100%; Guinea pig: 100%; Horse: 93%; Rabbit: 93%; Mouse: 92%


[View online »](#)

## Product images:



WB Suggested Anti-ECHDC1 Antibody Titration:  
0.2-1 ug/ml; Positive Control: MCF7 cell lysate