

## Product datasheet for **TA346798**

### **METTL2B Rabbit Polyclonal Antibody**

#### **Product data:**

<b>Product Type:</b>	Primary Antibodies
<b>Applications:</b>	WB
<b>Recommended Dilution:</b>	WB
<b>Reactivity:</b>	Human
<b>Host:</b>	Rabbit
<b>Isotype:</b>	IgG
<b>Clonality:</b>	Polyclonal
<b>Immunogen:</b>	The immunogen for anti-METTL2B antibody: synthetic peptide directed towards the N terminal of human METTL2B. Synthetic peptide located within the following region: AGSYPEGAPAILADKRQQFGSRFLSDPARVFNHNAWDNVEWSEEQAAAAE
<b>Formulation:</b>	Liquid. Purified antibody supplied in 1x PBS buffer with 0.09% (w/v) sodium azide and 2% sucrose. <i>Note that this product is shipped as lyophilized powder to China customers.</i>
<b>Purification:</b>	Affinity Purified
<b>Conjugation:</b>	Unconjugated
<b>Storage:</b>	Store at -20°C as received.
<b>Stability:</b>	Stable for 12 months from date of receipt.
<b>Predicted Protein Size:</b>	43 kDa
<b>Gene Name:</b>	methyltransferase like 2B
<b>Database Link:</b>	<a href="#">NP_060866</a> <a href="#">Entrez Gene 55798 Human</a> <a href="#">Q6P1Q9</a>
<b>Background:</b>	This gene is a member of a family of methyltransferases that share homology with, but are distinct from, the UbiE family of methyltransferases. Alternatively spliced variants which encode different protein isoforms have been described; however, not all variants have been fully characterized. [provided by RefSeq, Jul 2008]
<b>Synonyms:</b>	METL; METTL2; METTL2A; PSENIP1



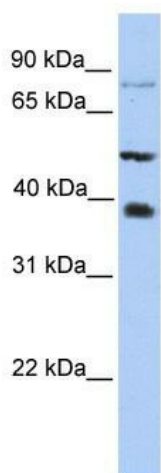
[View online »](#)

**Note:** Immunogen Sequence Homology: Dog: 100%; Pig: 100%; Horse: 100%; Human: 100%; Bovine: 100%; Rabbit: 93%; Rat: 86%; Mouse: 86%; Zebrafish: 77%; Guinea pig: 77%

**Protein Families:** Druggable Genome

**Protein Pathways:** Androgen and estrogen metabolism, Histidine metabolism, Selenoamino acid metabolism, Tyrosine metabolism

### Product images:



WB Suggested Anti-METTL2B Antibody Titration: 0.2-1 ug/ml; Positive Control: HepG2 cell lysate