

Product datasheet for **TA346796**

ECHDC2 Rabbit Polyclonal Antibody

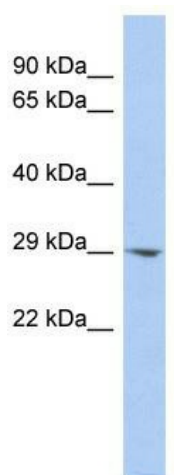
Product data:

Product Type:	Primary Antibodies
Applications:	WB
Recommended Dilution:	WB
Reactivity:	Human
Host:	Rabbit
Isotype:	IgG
Clonality:	Polyclonal
Immunogen:	The immunogen for anti-ECHDC2 antibody: synthetic peptide directed towards the middle region of human ECHDC2. Synthetic peptide located within the following region: TQRLPRCLGVALAKELIFTGRRLSGTEAHVLGLVNHAVAQNEEGDAAYQR
Formulation:	Liquid. Purified antibody supplied in 1x PBS buffer with 0.09% (w/v) sodium azide and 2% sucrose. <i>Note that this product is shipped as lyophilized powder to China customers.</i>
Purification:	Affinity Purified
Conjugation:	Unconjugated
Storage:	Store at -20°C as received.
Stability:	Stable for 12 months from date of receipt.
Predicted Protein Size:	28 kDa
Gene Name:	enoyl-CoA hydratase domain containing 2
Database Link:	NP_060751 Entrez Gene 55268 Human Q86YB7
Background:	ECHDC2 belongs to the enoyl-CoA hydratase/isomerase family. The exact function of ECHDC2 remains unknown.
Synonyms:	DKFZp686F0985; DKFZp686K13244; FLJ10948; FLJ45240; FLJ51075; FLJ52213; FLJ52450; FLJ78805
Note:	Immunogen Sequence Homology: Rat: 100%; Human: 100%; Rabbit: 100%; Pig: 93%; Mouse: 93%; Bovine: 93%; Horse: 86%; Guinea pig: 86%; Zebrafish: 79%



[View online »](#)

Product images:



WB Suggested Anti-ECHDC2 Antibody Titration:
0.2-1 ug/ml; ELISA Titer: 1: 12500; Positive
Control: THP-1 cell lysate