

Product datasheet for TA346795

Pcmt2 Rabbit Polyclonal Antibody

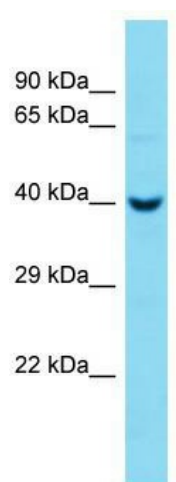
Product data:

Product Type:	Primary Antibodies
Applications:	WB
Recommended Dilution:	WB
Reactivity:	Mouse
Host:	Rabbit
Isotype:	IgG
Clonality:	Polyclonal
Immunogen:	The immunogen for Anti-Pcmt2 antibody is synthetic peptide directed towards the C-terminal region of Mouse Pcmt2. Synthetic peptide located within the following region: LDKEVFASRISNPSSDDTSCEDAEDRREVAERTLQETKPEPPVNFLRQRV
Formulation:	Liquid. Purified antibody supplied in 1x PBS buffer with 0.09% (w/v) sodium azide and 2% sucrose. <i>Note that this product is shipped as lyophilized powder to China customers.</i>
Purification:	Affinity Purified
Conjugation:	Unconjugated
Storage:	Store at -20°C as received.
Stability:	Stable for 12 months from date of receipt.
Predicted Protein Size:	41 kDa
Gene Name:	protein-L-isoaspartate (D-aspartate) O-methyltransferase domain containing 2
Database Link:	NP_705822 Entrez Gene 245867 Mouse Q8BHD8
Background:	The function of this protein remains unknown.
Synonyms:	C20orf36; FLJ10883; KIAA0835; KIAA1050
Note:	Immunogen Sequence Homology: Pig: 100%; Rat: 100%; Horse: 100%; Human: 100%; Mouse: 100%; Bovine: 100%; Guinea pig: 100%; Dog: 93%; Rabbit: 93%



[View online »](#)

Product images:



Host: Rabbit; Target Name: Pcmt2; Sample
Tissue: Mouse Liver lysates; Antibody Dilution: 1.0
ug/ml