

Product datasheet for **TA346794**

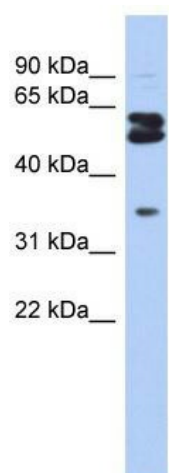
OGFOD1 Rabbit Polyclonal Antibody

Product data:

Product Type:	Primary Antibodies
Applications:	WB
Recommended Dilution:	WB
Reactivity:	Human
Host:	Rabbit
Isotype:	IgG
Clonality:	Polyclonal
Immunogen:	The immunogen for anti-OGFOD1 antibody: synthetic peptide directed towards the middle region of human OGFOD1. Synthetic peptide located within the following region: GCEGWEPEYGGFTSYIAKGEDEELLTVNPESNSLALVYRDRETLKFKV KHI
Formulation:	Liquid. Purified antibody supplied in 1x PBS buffer with 0.09% (w/v) sodium azide and 2% sucrose. <i>Note that this product is shipped as lyophilized powder to China customers.</i>
Purification:	Affinity Purified
Conjugation:	Unconjugated
Storage:	Store at -20°C as received.
Stability:	Stable for 12 months from date of receipt.
Predicted Protein Size:	63 kDa
Gene Name:	2-oxoglutarate and iron dependent oxygenase domain containing 1
Database Link:	NP_060703 Entrez Gene 55239 Human Q8N543
Background:	The specific function of this protein remains unknown.
Synonyms:	TPA1
Note:	Immunogen Sequence Homology: Dog: 100%; Pig: 100%; Rat: 100%; Horse: 100%; Human: 100%; Mouse: 100%; Bovine: 100%; Rabbit: 100%; Guinea pig: 100%; Zebrafish: 86%



[View online »](#)

Product images:

WB Suggested Anti-OGFOD1 Antibody Titration:
0.2-1 ug/ml; ELISA Titer: 1: 62500; Positive
Control: DU145 cell lysate; OGFOD1 is supported
by BioGPS gene expression data to be expressed
in DU145