

Product datasheet for **TA346793**

POLR3B Rabbit Polyclonal Antibody

Product data:

Product Type:	Primary Antibodies
Applications:	WB
Recommended Dilution:	WB
Reactivity:	Human
Host:	Rabbit
Isotype:	IgG
Clonality:	Polyclonal
Immunogen:	The immunogen for anti-POLR3B antibody: synthetic peptide directed towards the C terminal of human POLR3B. Synthetic peptide located within the following region: IEKVMISSNAEDAFLIKMLLRQTRRPEIGDKFSSRHGQKGVCGLIVPQED
Formulation:	Liquid. Purified antibody supplied in 1x PBS buffer with 0.09% (w/v) sodium azide and 2% sucrose. <i>Note that this product is shipped as lyophilized powder to China customers.</i>
Purification:	Affinity Purified
Conjugation:	Unconjugated
Storage:	Store at -20°C as received.
Stability:	Stable for 12 months from date of receipt.
Predicted Protein Size:	128 kDa
Gene Name:	polymerase (RNA) III subunit B
Database Link:	NP_060552 Entrez Gene 55703 Human Q9NW08
Background:	This gene encodes the second largest subunit of RNA polymerase III, the polymerase responsible for synthesizing transfer and small ribosomal RNAs in eukaryotes. The largest subunit and the encoded protein form the catalytic center of RNA polymerase III. Mutations in this gene are a cause of hypomyelinating leukodystrophy. Alternatively spliced transcript variants encoding multiple isoforms have been observed for this gene. [provided by RefSeq, Dec 2011]



[View online »](#)

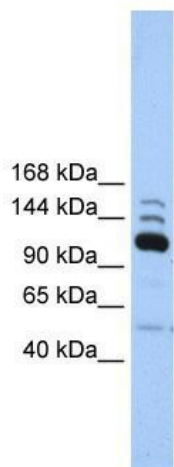
Synonyms: C128; HLD8; INMAP; RPC2

Note: Immunogen Sequence Homology: Dog: 100%; Pig: 100%; Rat: 100%; Horse: 100%; Human: 100%; Mouse: 100%; Bovine: 100%; Rabbit: 100%; Zebrafish: 100%; Guinea pig: 100%; Goat: 93%; Yeast: 93%

Protein Families: Transcription Factors

Protein Pathways: Cytosolic DNA-sensing pathway, Metabolic pathways, Purine metabolism, Pyrimidine metabolism, RNA polymerase

Product images:



WB Suggested Anti-POLR3B Antibody Titration:
0.2-1 ug/ml; Positive Control: Human heart