

Product datasheet for **TA346792**

TRMT1 (TRMU) Rabbit Polyclonal Antibody

Product data:

Product Type:	Primary Antibodies
Applications:	WB
Recommended Dilution:	WB
Reactivity:	Human
Host:	Rabbit
Isotype:	IgG
Clonality:	Polyclonal
Immunogen:	The immunogen for anti-TRMU antibody: synthetic peptide directed towards the C terminal of human TRMU. Synthetic peptide located within the following region: ALATGQFAVFKGDECLGSGKILRLGPSAYTLQKGQRRAGMATESPSPD
Formulation:	Liquid. Purified antibody supplied in 1x PBS buffer with 0.09% (w/v) sodium azide and 2% sucrose. <i>Note that this product is shipped as lyophilized powder to China customers.</i>
Purification:	Affinity Purified
Conjugation:	Unconjugated
Storage:	Store at -20°C as received.
Stability:	Stable for 12 months from date of receipt.
Predicted Protein Size:	48 kDa
Gene Name:	tRNA 5-methylaminomethyl-2-thiouridylate methyltransferase
Database Link:	NP_060476 Entrez Gene 55687 Human O75648

Background: This nuclear gene encodes a mitochondrial tRNA-modifying enzyme. The encoded protein catalyzes the 2-thiolation of uridine on the wobble positions of tRNA(Lys), tRNA(Glu), and tRNA(Gln), resulting in the formation of 5-taurinomethyl-2-thiouridine moieties. Mutations in this gene may cause transient infantile liver failure. Polymorphisms in this gene may also influence the severity of deafness caused by mitochondrial 12S ribosomal RNA mutations. Alternative splicing results in multiple transcript variants. [provided by RefSeq, Sep 2013]

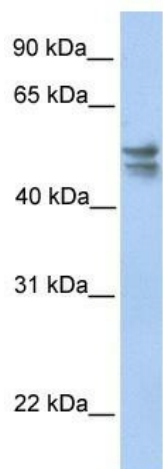


[View online »](#)

Synonyms: LCAL3; MTO2; MTU1; TRMT; TRMT1; TRNT1

Note: Immunogen Sequence Homology: Pig: 100%; Rat: 100%; Human: 100%; Mouse: 100%; Bovine: 100%; Rabbit: 100%; Guinea pig: 100%; Dog: 92%; Horse: 92%

Product images:



WB Suggested Anti-TRMU Antibody Titration: 0.2-1 ug/ml; Positive Control: HeLa cell lysate; TRMU is supported by BioGPS gene expression data to be expressed in HeLa