

Product datasheet for **TA346786**

BHMT2 Rabbit Polyclonal Antibody

Product data:

Product Type:	Primary Antibodies
Applications:	WB
Recommended Dilution:	WB
Reactivity:	Human, Rat
Host:	Rabbit
Isotype:	IgG
Clonality:	Polyclonal
Immunogen:	The immunogen for anti-BHMT2 antibody: synthetic peptide directed towards the middle region of human BHMT2. Synthetic peptide located within the following region: GFVDLPEYPFGLSRVATRWDIQKYAREAYNLGVRYIGGCCGFEPYHIRA
Formulation:	Liquid. Purified antibody supplied in 1x PBS buffer with 0.09% (w/v) sodium azide and 2% sucrose. <i>Note that this product is shipped as lyophilized powder to China customers.</i>
Purification:	Affinity Purified
Conjugation:	Unconjugated
Storage:	Store at -20°C as received.
Stability:	Stable for 12 months from date of receipt.
Predicted Protein Size:	40 kDa
Gene Name:	betaine--homocysteine S-methyltransferase 2
Database Link:	NP_060084 Entrez Gene 365972 Rat Entrez Gene 23743 Human Q9H2M3



[View online »](#)

Background:

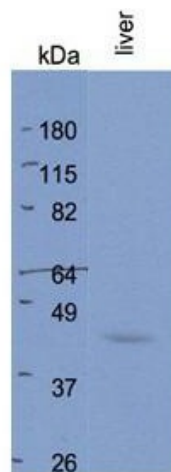
Homocysteine is a sulfur-containing amino acid that plays a crucial role in methylation reactions. Transfer of the methyl group from betaine to homocysteine creates methionine, which donates the methyl group to methylate DNA, proteins, lipids, and other intracellular metabolites. The protein encoded by this gene is one of two methyl transferases that can catalyze the transfer of the methyl group from betaine to homocysteine. Anomalies in homocysteine metabolism have been implicated in disorders ranging from vascular disease to neural tube birth defects such as spina bifida. Alternatively spliced transcript variants encoding different isoforms have been found for this gene. [provided by RefSeq, May 2010]

Synonyms:

FLJ20001

Note:

Immunogen Sequence Homology: Human: 100%; Dog: 93%; Pig: 93%; Rat: 93%; Mouse: 93%; Guinea pig: 93%; Bovine: 86%; Horse: 79%

Product images:


BHMT2 antibody - middle region validated by WB using Rat Liver at 1 ug/mL.



WB Suggested Anti-BHMT2 Antibody Titration: 0.2-1 ug/ml; ELISA Titer: 1: 12500; Positive Control: PANC1 cell lysate