

## Product datasheet for **TA346782**

### POLK Rabbit Polyclonal Antibody

#### Product data:

Product Type:	Primary Antibodies
Applications:	WB
Recommended Dilution:	WB
Reactivity:	Human
Host:	Rabbit
Isotype:	IgG
Clonality:	Polyclonal
Immunogen:	The immunogen for anti-POLK antibody: synthetic peptide directed towards the N terminal of human POLK. Synthetic peptide located within the following region: KINKIIMEATKGSRFYGNELKKEKQVNQRIENMMQKAQITSQQLRKAQL
Formulation:	Liquid. Purified antibody supplied in 1x PBS buffer with 0.09% (w/v) sodium azide and 2% sucrose. <i>Note that this product is shipped as lyophilized powder to China customers.</i>
Purification:	Affinity Purified
Conjugation:	Unconjugated
Storage:	Store at -20°C as received.
Stability:	Stable for 12 months from date of receipt.
Predicted Protein Size:	99 kDa
Gene Name:	polymerase (DNA) kappa
Database Link:	<a href="#">NP_057302</a> <a href="#">Entrez Gene 51426 Human</a> <a href="#">Q9UBT6</a>



[View online »](#)

**Background:**

External and internal DNA-damaging agents continually threaten the integrity of genetic material in cells. Although a variety of repair mechanisms exist to remove the resulting lesions, some lesions escape repair and block the replication machinery. Members of the Y family of DNA polymerases, such as POLK, permit the continuity of the replication fork by allowing replication through such DNA lesions. Each Y family polymerase has a unique DNA-damage bypass and fidelity profile. POLK is specialized for the extension step of lesion bypass (summary by Lone et al., 2007 [PubMed 17317631]). [supplied by OMIM, Jan 2010]. Sequence Note: This RefSeq record was created from transcript and genomic sequence data because no single transcript was available for the full length of the gene. The extent of this transcript is supported by transcript alignments. Publication Note: This RefSeq record includes a subset of the publications that are available for this gene. Please see the Gene record to access additional publications. ##Evidence-Data-START## Transcript exon combination :: AF163570.1 [ECO:0000332] RNAseq introns :: single sample supports all introns ERS025081, ERS025084 [ECO:0000348] ##Evidence-Data-END## COMPLETENESS: complete on the 3' end.

**Synonyms:**

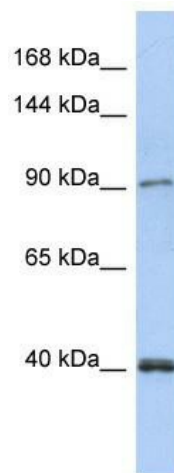
DINB1; DINP; POLQ

**Note:**

Immunogen Sequence Homology: Dog: 100%; Pig: 100%; Rat: 100%; Horse: 100%; Human: 100%; Mouse: 100%; Bovine: 86%; Guinea pig: 86%

**Protein Families:**

Druggable Genome

**Product images:**

WB Suggested Anti-POLK Antibody Titration: 0.2-1 ug/ml; ELISA Titer: 1: 12500; Positive Control: Human kidney