

## Product datasheet for **TA346774**

### HPGDS Rabbit Polyclonal Antibody

#### Product data:

Product Type:	Primary Antibodies
Applications:	IHC, WB
Recommended Dilution:	WB, IHC
Reactivity:	Human
Host:	Rabbit
Isotype:	IgG
Clonality:	Polyclonal
Immunogen:	The immunogen for anti-PGDS antibody: synthetic peptide directed towards the N terminal of human PGDS. Synthetic peptide located within the following region: EQADWPEIKSTLPGKIPILEVDGLTLHQLAIARYLTKNTDLAGNTEME
Formulation:	Liquid. Purified antibody supplied in 1x PBS buffer with 0.09% (w/v) sodium azide and 2% sucrose. <i>Note that this product is shipped as lyophilized powder to China customers.</i>
Purification:	Affinity Purified
Conjugation:	Unconjugated
Storage:	Store at -20°C as received.
Stability:	Stable for 12 months from date of receipt.
Predicted Protein Size:	23 kDa
Gene Name:	hematopoietic prostaglandin D synthase
Database Link:	<a href="#">NP_055300</a> <a href="#">Entrez Gene 27306 Human</a> <a href="#">O60760</a>
Background:	Prostaglandin-D synthase is a sigma class glutathione-S-transferase family member. The enzyme catalyzes the conversion of PGH <sub>2</sub> to PGD <sub>2</sub> and plays a role in the production of prostanoids in the immune system and mast cells. The presence of this enzyme can be used to identify the differentiation stage of human megakaryocytes. [provided by RefSeq, Jul 2008]
Synonyms:	GSTS; GSTS1; GSTS1-1; PGD2; PGDS

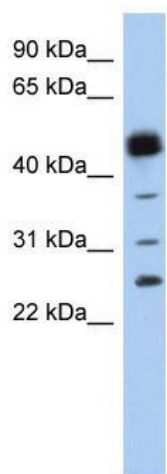


[View online »](#)

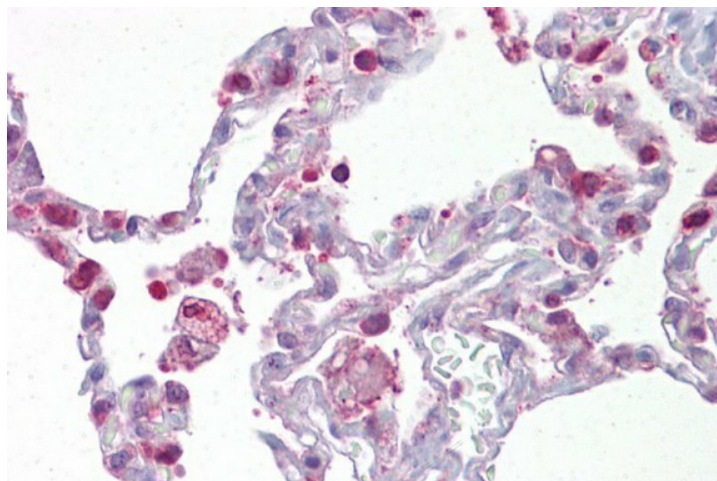
**Note:** Immunogen Sequence Homology: Rat: 100%; Human: 100%; Mouse: 100%; Dog: 92%; Pig: 92%; Horse: 92%; Bovine: 92%; Rabbit: 92%; Guinea pig: 92%

**Protein Pathways:** Arachidonic acid metabolism, Metabolic pathways

**Product images:**



WB Suggested Anti-PGDS Antibody Titration: 0.2-1 ug/ml; ELISA Titer: 1: 12500; Positive Control: Human Spleen



Lung