

Product datasheet for **TA346771**

SULT1B1 Rabbit Polyclonal Antibody

Product data:

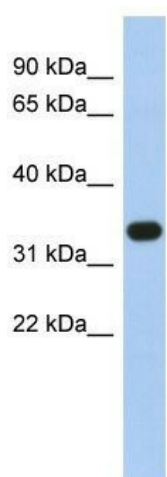
Product Type:	Primary Antibodies
Applications:	WB
Recommended Dilution:	WB
Reactivity:	Human
Host:	Rabbit
Isotype:	IgG
Clonality:	Polyclonal
Immunogen:	The immunogen for anti-SULT1B1 antibody: synthetic peptide directed towards the N terminal of human SULT1B1. Synthetic peptide located within the following region: MLSPKDILRKDLKLVHGYPMTCASFASNWEKIEQFHSRPDDIVATYPKSG
Formulation:	Liquid. Purified antibody supplied in 1x PBS buffer with 0.09% (w/v) sodium azide and 2% sucrose. <i>Note that this product is shipped as lyophilized powder to China customers.</i>
Purification:	Affinity Purified
Conjugation:	Unconjugated
Storage:	Store at -20°C as received.
Stability:	Stable for 12 months from date of receipt.
Predicted Protein Size:	35 kDa
Gene Name:	sulfotransferase family 1B member 1
Database Link:	NP_055280 Entrez Gene 27284 Human O43704
Background:	Sulfotransferase enzymes catalyze the sulfate conjugation of many hormones, neurotransmitters, drugs, and xenobiotic compounds. These cytosolic enzymes are different in their tissue distributions and substrate specificities. The gene structure (number and length of exons) is similar among family members. However, the total genomic length of this gene is greater than that of other SULT1 genes. [provided by RefSeq, Jul 2008]
Synonyms:	ST1B1; ST1B2; SULT1B2



[View online »](#)

Note: Immunogen Sequence Homology: Human: 100%; Bovine: 92%; Dog: 86%; Rat: 86%; Pig: 79%

Product images:



WB Suggested Anti-SULT1B1 Antibody Titration:
0.2-1 ug/ml; ELISA Titer: 1: 12500; Positive
Control: Human Intestine