

## Product datasheet for **TA346770**

### NEK6 Rabbit Polyclonal Antibody

#### Product data:

Product Type:	Primary Antibodies
Applications:	WB
Recommended Dilution:	WB
Reactivity:	Human
Host:	Rabbit
Isotype:	IgG
Clonality:	Polyclonal
Immunogen:	The immunogen for anti-NEK6 antibody: synthetic peptide directed towards the N terminal of human NEK6. Synthetic peptide located within the following region: FRCSLADFQIEKKIGRGQFSEVYKATCLLDRKTVALKKVQIFEMMDAKAR
Formulation:	Liquid. Purified antibody supplied in 1x PBS buffer with 0.09% (w/v) sodium azide and 2% sucrose. <i>Note that this product is shipped as lyophilized powder to China customers.</i>
Purification:	Affinity Purified
Conjugation:	Unconjugated
Storage:	Store at -20°C as received.
Stability:	Stable for 12 months from date of receipt.
Predicted Protein Size:	36 kDa
Gene Name:	NIMA related kinase 6
Database Link:	<a href="#">NP_055212</a> <a href="#">Entrez Gene 10783 Human</a> <a href="#">Q9HC98</a>
Background:	The protein encoded by this gene is a kinase required for progression through the metaphase portion of mitosis. Inhibition of the encoded protein can lead to apoptosis. This protein also can enhance tumorigenesis by suppressing tumor cell senescence. Several transcript variants encoding a few different isoforms have been found for this gene. [provided by RefSeq, Oct 2011]
Synonyms:	SID6-1512

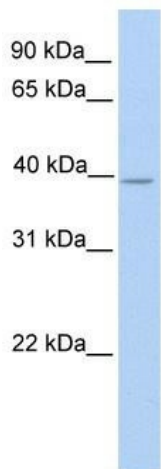


[View online »](#)

**Note:** Immunogen Sequence Homology: Dog: 100%; Pig: 100%; Rat: 100%; Horse: 100%; Human: 100%; Mouse: 100%; Bovine: 100%; Rabbit: 100%; Guinea pig: 100%; Zebrafish: 91%

**Protein Families:** Druggable Genome, Protein Kinase

**Product images:**



WB Suggested Anti-NEK6 Antibody Titration: 0.2-1 ug/ml; Positive Control: Human Lung