

## Product datasheet for **TA346769**

### QPCT Rabbit Polyclonal Antibody

#### Product data:

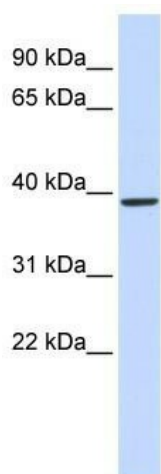
Product Type:	Primary Antibodies
Applications:	WB
Recommended Dilution:	WB
Reactivity:	Human
Host:	Rabbit
Isotype:	IgG
Clonality:	Polyclonal
Immunogen:	The immunogen for anti-QPCT antibody: synthetic peptide directed towards the middle region of human QPCT. Synthetic peptide located within the following region: SRHLAAKMASTPHPPGARGTSQLHGMDLLVLLDLIGAPNPTFPNFFPNSA
Formulation:	Liquid. Purified antibody supplied in 1x PBS buffer with 0.09% (w/v) sodium azide and 2% sucrose. <i>Note that this product is shipped as lyophilized powder to China customers.</i>
Purification:	Affinity Purified
Conjugation:	Unconjugated
Storage:	Store at -20°C as received.
Stability:	Stable for 12 months from date of receipt.
Predicted Protein Size:	38 kDa
Gene Name:	glutaminyl-peptide cyclotransferase
Database Link:	<a href="#">NP_036545</a> <a href="#">Entrez Gene 25797 Human Q16769</a>
Background:	This gene encodes human pituitary glutaminyl cyclase, which is responsible for the presence of pyroglutamyl residues in many neuroendocrine peptides. The amino acid sequence of this enzyme is 86% identical to that of bovine glutaminyl cyclase. [provided by RefSeq, Jul 2008]
Synonyms:	GCT; QC; sQC
Note:	Immunogen Sequence Homology: Rat: 100%; Human: 100%; Pig: 93%; Rabbit: 93%; Guinea pig: 93%; Sheep: 86%; Bovine: 86%; Dog: 79%; Horse: 79%; Mouse: 79%



[View online »](#)

Protein Families: Protease

### Product images:



WB Suggested Anti-QPCT Antibody Titration: 0.2-1 ug/ml; ELISA Titer: 1: 62500; Positive Control: Human Muscle