

Product datasheet for **TA346765**

Selenophosphate synthetase 1 (SEPHS1) Rabbit Polyclonal Antibody

Product data:

Product Type:	Primary Antibodies
Applications:	WB
Recommended Dilution:	WB
Reactivity:	Human
Host:	Rabbit
Isotype:	IgG
Clonality:	Polyclonal
Immunogen:	The immunogen for anti-SEPHS1 antibody: synthetic peptide directed towards the C terminal of human SEPHS1. Synthetic peptide located within the following region: PKYGEQHQAIIIGIVEKGNRTARIIDKPRIIEVAPQVATQNVNPTPGATS
Formulation:	Liquid. Purified antibody supplied in 1x PBS buffer with 0.09% (w/v) sodium azide and 2% sucrose. <i>Note that this product is shipped as lyophilized powder to China customers.</i>
Purification:	Protein A purified
Conjugation:	Unconjugated
Storage:	Store at -20°C as received.
Stability:	Stable for 12 months from date of receipt.
Predicted Protein Size:	43 kDa
Gene Name:	selenophosphate synthetase 1
Database Link:	NP_036379 Entrez Gene 22929 Human P49903
Background:	This gene encodes an enzyme that synthesizes selenophosphate from selenide and ATP. Selenophosphate is the selenium donor used to synthesize selenocysteine, which is co-translationally incorporated into selenoproteins at in-frame UGA codons. [provided by RefSeq, Sep 2010]
Synonyms:	SELD; SPS; SPS1



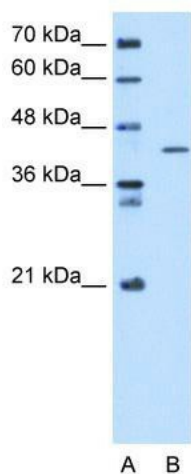
[View online »](#)

Note: Immunogen Sequence Homology: Dog: 100%; Pig: 100%; Rat: 100%; Human: 100%; Mouse: 100%; Bovine: 100%; Rabbit: 100%; Guinea pig: 100%; Horse: 93%; Zebrafish: 93%

Protein Families: Stem cell - Pluripotency

Protein Pathways: Metabolic pathways, Selenoamino acid metabolism

Product images:



WB Suggested Anti-SEPHS1 Antibody Titration: 5.0 ug/ml; Positive Control: HepG2 cell lysate
SEPHS1 is strongly supported by BioGPS gene expression data to be expressed in Human HepG2 cells